



Benham & Reeves

Westwood House, Millharbour, E14

£600 per week, £2,600 per month + fees

🛏️ 2 Bedrooms 🚿 1 Bathroom 🛋️ Part-furnished

Bright, spacious apartment with East facing balcony positioned 0.2 miles from South Quay DLR and 0.5 Miles from Canary Wharf Underground Station where you have access to the Jubilee Line with excellent link into Central London

Please [click here](#) for full detail

Property features

Two Double Bedrooms | One Family Bathroom | Open Plan Reception | Fitted Kitchen | Balcony | EPC-B | Residents Gym Private | Part Furnished | Nearby South Quay DLR and Canary Wharf Underground Station

For more information about this property,
please call our Canary Wharf branch on

020 8036 3200

Redress & Client Money Protection :

Benham and Reeves are members of The Property Ombudsman redress scheme and have Client Money protection with ARLA Propertymark. You can find more information on our website at <https://www.benhams.com/membership/>



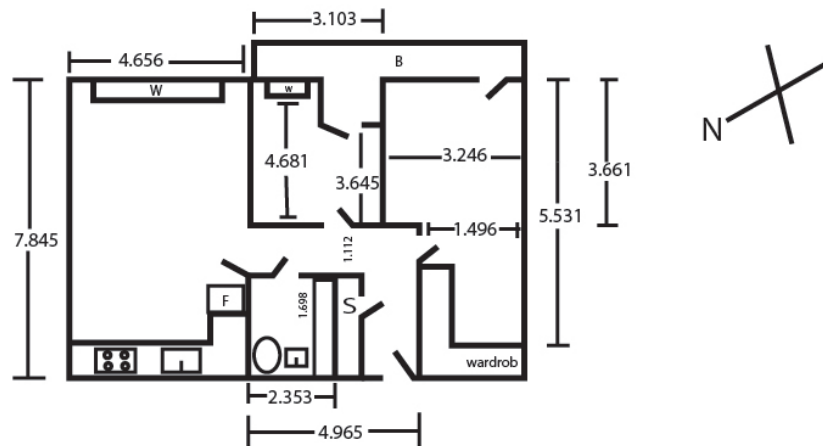
Benham & Reeves



Westwood House, Millharbour, E14

£600 per week, £2,600 per month + fees

www.benhams.com



Score	Energy rating	Current	Potential
92+	A		
81-91	B	85 B	85 B
69-80	C		
55-68	D		
39-54	E		
21-38	F		
1-20	G		

London branches open six days a week Mon - Sat

Canary Wharf | City | Colindale | Dartmouth Park | Ealing | Fulham
Hammersmith | Hampstead | Highgate | Hyde Park | Kensington | Kew
Knightsbridge | Nine Elms | Shoreditch | Southall | Surrey Quays
Wapping | Wembley | White City | Woolwich

International offices

China | Hong Kong SAR | India | Indonesia | Qatar | Malaysia | Middle East | Pakistan
Singapore | South Africa | Thailand | Turkey

