



Benham & Reeves

North Greenwich, Millenium Gardens, SE10

£438 per week, £1,900 per month + fees

 1 Bedroom  1 Bathroom  Furnished

Contemporary furnished 1 bed flat located on the 8th floor. Situated within the ever-popular Greenwich Millennium Village. EPC B

Please [click here](#) for full detail

Property features

Contemporary furnished 1 bed flat located on the 8th floor | Open plan kitchen with integrated kitchen appliances | Private balcony | Concierge service | Easy access to O2 tube station | EPC-B | Spans out overall 590 sqft | Close to amenities | North Greenwich under ground station (Jubilee Line).

For more information about this property, please call our Woolwich branch on

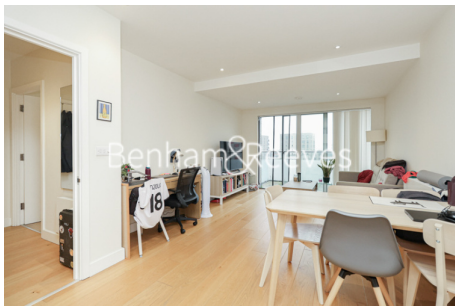
020 8051 0700

Redress & Client Money Protection :

Benham and Reeves are members of The Property Ombudsman redress scheme and have Client Money protection with ARLA Propertymark. You can find more information on our website at <https://www.benhams.com/membership/>



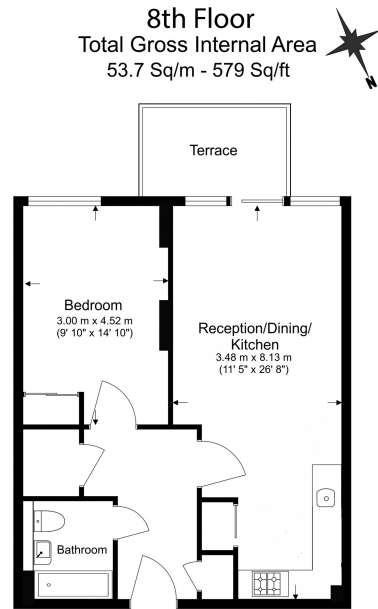
Benham & Reeves



North Greenwich, Millenium Gardens, SE10

£438 per week, £1,900 per month + fees

www.benhams.com



Benham & Reeves

Floor Plan measurements are approximate and are for illustrative purposes only. While we do not doubt the floor plans accuracy, we make no guarantee, warranty or representation as to the accuracy and completeness of the floor plan.

Score	Energy rating	Current	Potential
92+	A		
81-91	B	83 B	83 B
69-80	C		
55-68	D		
39-54	E		
21-38	F		
1-20	G		

London branches open six days a week Mon - Sat

Canary Wharf | City | Colindale | Dartmouth Park | Ealing | Fulham
Hammersmith | Hampstead | Highgate | Hyde Park | Kensington | Kew
Knightsbridge | Nine Elms | Shoreditch | Southall | Surrey Quays
Wapping | Wembley | White City | Woolwich

International offices

China | Hong Kong SAR | India | Indonesia | Qatar | Malaysia | Middle East | Pakistan
Singapore | South Africa | Thailand | Turkey



Benham & Reeves