



Benham & Reeves

Landmark east tower, Marsh wall, E14

£727 per week, £3,150 per month + fees

 2 Bedrooms  2 Bathrooms  Furnished

Conveniently located 2nd floor suite style apartment situated within an outstanding Berkeley development on the Western fringe of London, featuring great views of the surrounding landscaped gardens. Southall Station (Zone 4) is just a short walk away and is a strategic stop on the new super-fast Elizabeth Line.

Please [click here](#) for full detail

Property features

2 Double Bedroom | Luxury Bathroom | Open Planned Living | Furnished | Fully Fitted Modern Kitchen | EPC-B | 24 Hours Concierge, Secured and Gated | Under floor heater and air conditioning | South Quay and Heron Quay DLR Station & Canary Wharf Station

For more information about this property,
please call our Canary Wharf branch on

020 8036 3200

Redress & Client Money Protection :

Benham and Reeves are members of The Property Ombudsman redress scheme and have Client Money protection with ARLA Propertymark. You can find more information on our website at <https://www.benhams.com/membership/>



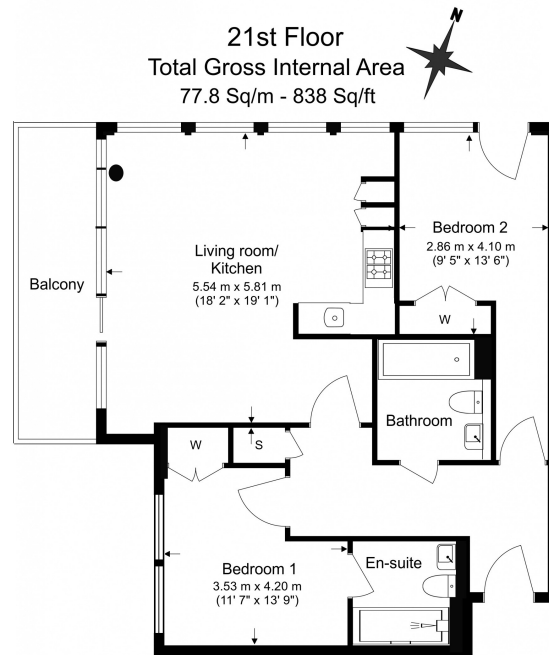
Benham & Reeves



Landmark east tower, Marsh wall, E14

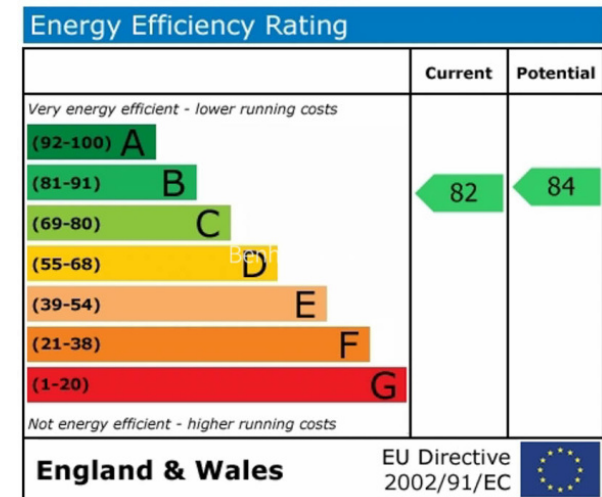
£727 per week, £3,150 per month + fees

www.benhams.com



Benham & Reeves

Floor Plan measurements are approximate and are for illustrative purposes only. While we do not doubt the floor plans accuracy, we make no guarantee, warranty or representation as to the accuracy and completeness of the floor plan.



London branches open six days a week Mon - Sat

Canary Wharf | City | Colindale | Dartmouth Park | Ealing | Fulham
Hammersmith | Hampstead | Highgate | Hyde Park | Kensington | Kew
Knightsbridge | Nine Elms | Shoreditch | Southall | Surrey Quays
Wapping | Wembley | White City | Woolwich



International offices

China | Hong Kong SAR | India | Indonesia | Qatar | Malaysia | Middle East | Pakistan
Singapore | South Africa | Thailand | Turkey

Benham & Reeves