



Benham & Reeves

Elgin Avenue, Maida Vale, W9

£588 per week, £2,548 per month + fees

 2 Bedrooms  1 Bathroom  Unfurnished

Spacious 1st floor period conversion, with an extensively refurbished interior is situated within a sought-after location, a 6-minute walk from Warwick Avenue Underground Station (Bakerloo Line, Zone 2).

Please [click here](#) for full detail

Property features

Unfurnished | Private balcony | Contemporary design and features | High-quality fixtures and fittings | Well-appointed kitchen with modern appliances & ample space | EPC-C | Modern 3 piece bathroom | Second bedroom, ideal for guests, a home office, or nursery | Convenient location in Maida Vale, with easy access to shops | Nearby Maida Vale Underground Station

For more information about this property,
please call our Hampstead branch on

020 7435 9681

Redress & Client Money Protection :

Benham and Reeves are members of The Property Ombudsman redress scheme and have Client Money protection with ARLA Propertymark. You can find more information on our website at <https://www.benhams.com/membership/>



Benham & Reeves

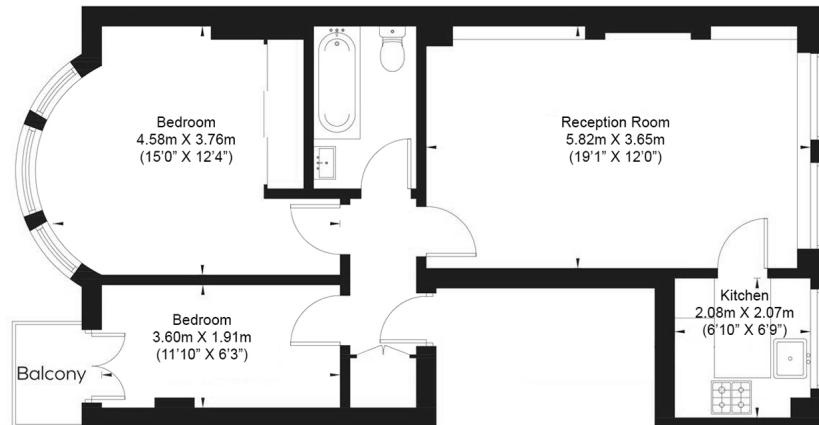


Elgin Avenue, Maida Vale, W9

£588 per week, £2,548 per month + fees

www.benhams.com

First Floor
Total Gross Internal Area
 56.2 Sq/m - 605 Sq/ft



Floor Plan measurements are approximate and are for illustrative purposes only. While we do not doubt the floor plans accuracy, we make no guarantee, warranty or representation as to the accuracy and completeness of the floor plan.

Score	Energy rating	Current	Potential
92+	A		
81-91	B		82 B
69-80	C	70 C	
55-68	D		
39-54	E		
21-38	F		
1-20	G		

London branches open six days a week Mon - Sat

Canary Wharf | City | Colindale | Dartmouth Park | Ealing | Fulham
 Hammersmith | Hampstead | Highgate | Hyde Park | Kensington | Kew
 Knightsbridge | Nine Elms | Shoreditch | Southall | Surrey Quays
 Wapping | Wembley | White City | Woolwich



International offices

China | Hong Kong SAR | India | Indonesia | Qatar | Malaysia | Middle East | Pakistan
 Singapore | South Africa | Thailand | Turkey