



Benham & Reeves

Chelsea Wharf, Lots Road, SW10

£1,731 per week, £7,500 per month + fees

 2 Bedrooms  3 Bathrooms  Unfurnished

A spacious 2nd floor penthouse apartment situated in a desirable development along the River Thames. Ideally located near the amenities of Chelsea, and within walking distance from Imperial Wharf Overground station. EPC-C

Please [click here](#) for full detail

Property features

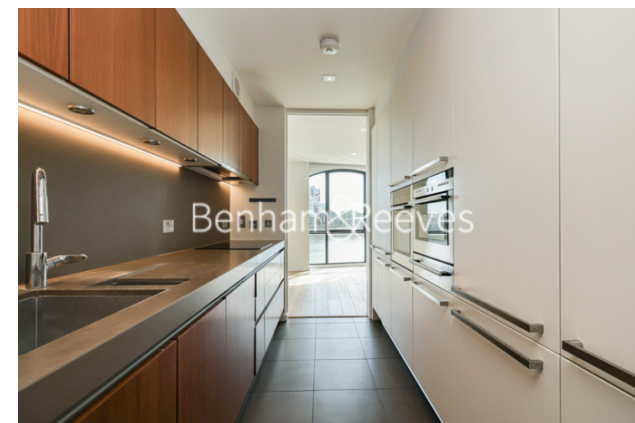
2 Bedrooms | Direct River views | Unfurnished | 24 hour porter | High quality fitted kitchen | EPC-C | 1 right to park | 2nd floor (with lift access) | Walking distance to Imperial wharf station

For more information about this property,
please call our Fulham branch on

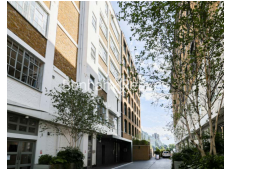
020 7348 7620

Redress & Client Money Protection :

Benham and Reeves are members of The Property Ombudsman redress scheme and have Client Money protection with ARLA Propertymark. You can find more information on our website at <https://www.benhams.com/membership/>



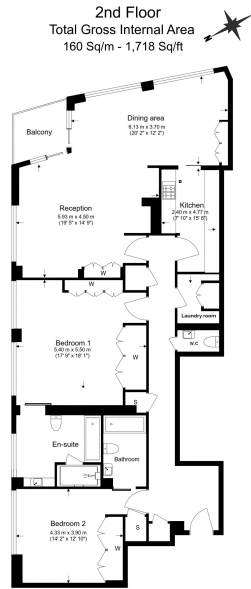
Benham & Reeves



Chelsea Wharf, Lots Road, SW10

£1,731 per week, £7,500 per month + fees

www.benhams.com



Benham & Reeves
Floor Plan measurements are approximate and are for illustrative purposes only. While we do not doubt the floor plans accuracy, we make no guarantee, warranty or representation as to the accuracy and completeness of the floor plan.

Score	Energy rating	Current	Potential
92+	A		
81-91	B	82 B	84 B
69-80	C		
55-68	D		
39-54	E		
21-38	F		
1-20	G		

London branches open six days a week Mon - Sat

Canary Wharf | City | Colindale | Dartmouth Park | Ealing | Fulham
Hammersmith | Hampstead | Highgate | Hyde Park | Kensington | Kew
Knightsbridge | Nine Elms | Shoreditch | Southall | Surrey Quays
Wapping | Wembley | White City | Woolwich

International offices

China | Hong Kong SAR | India | Indonesia | Qatar | Malaysia | Middle East | Pakistan
Singapore | South Africa | Thailand | Turkey

