



Benham & Reeves

## St Stephens Gardens, Lancaster Gate, W2

£415 per week, £1,798 per month + fees

🛏 Studio   🚿 1 Bathroom   🚗 Furnished

A well-presented, ground floor studio apartment set in a white stucco-fronted building close to the amenities of Bayswater and Queensway. The property features a well-proportioned and functional layout, and is offered on a furnished basis.

Please [click here](#) for full detail

## Property features

Studio | 1 Bathroom | Reception | Furnished | Fitted Kitchen | EPC-B | Resident Parking | Wood Floors | Nearby Royal Oak Tube Station

For more information about this property, please call our Hyde Park branch on

**020 7402 9866**

Redress & Client Money Protection :

Benham and Reeves are members of The Property Ombudsman redress scheme and have Client Money protection with ARLA Propertymark. You can find more information on our website at <https://www.benhams.com/membership/>



Benham & Reeves

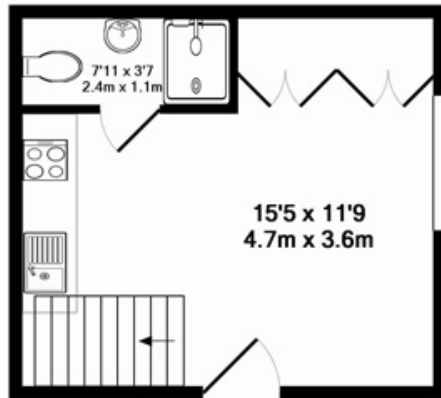




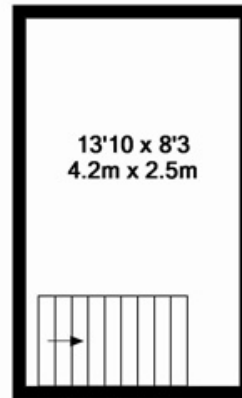
# St Stephens Gardens, Lancaster Gate, W2

£415 per week, £1,798 per month + fees

www.benhams.com



GROUND FLOOR  
APPROX. FLOOR  
AREA 213 SQ.FT.  
(19.8 SQ.M.)



MEZZANINE  
APPROX. FLOOR  
AREA 114 SQ.FT.  
(10.6 SQ.M.)

ST STEPHENS GARDENS  
TOTAL APPROX. FLOOR AREA 328 SQ.FT. (30.4 SQ.M.)

Whilst every attempt has been made to ensure the accuracy of the floor plan contained here, measurements of doors, windows, rooms and any other items are approximate and no responsibility is taken for any error, omission, or mis-statement. This plan is for illustrative purposes only and should be used as such by any prospective purchaser. The services, systems and appliances shown have not been tested and no guarantee as to their operability or efficiency can be given  
Made with Metropix ©2014

Energy Efficiency Rating		
	Current	Potential
Very energy efficient - lower running costs		
(92 plus) <b>A</b>		
(81-91) <b>B</b>	82	83
(69-80) <b>C</b>		
(55-68) <b>D</b>		
(39-54) <b>E</b>		
(21-38) <b>F</b>		
(1-20) <b>G</b>		
Not energy efficient - higher running costs		
<b>England &amp; Wales</b>	EU Directive 2002/91/EC	

## London branches open six days a week Mon - Sat

Canary Wharf | City | Colindale | Dartmouth Park | Ealing | Fulham  
Hammersmith | Hampstead | Highgate | Hyde Park | Kensington | Kew  
Knightsbridge | Nine Elms | Shoreditch | Southall | Surrey Quays  
Wapping | Wembley | White City | Woolwich

## International offices

China | Hong Kong SAR | India | Indonesia | Qatar | Malaysia | Middle East | Pakistan  
Singapore | South Africa | Thailand | Turkey

