



Benham & Reeves

Egerton Gardens, Knightsbridge, SW3

£995 per week, £4,312 per month + fees

 2 Bedrooms  2 Bathrooms  Furnished

An exquisite 800 sq ft TWO-BEDROOM apartment situated within an elegant period building with private PATIO overlooking lush gardens in prestigious EGERTON GARDENS in the heart of KNIGHTSBRIDGE. Residents benefit from close proximity to world famous shops, restaurants, museums & entertainment in one of London's most desired areas. Available 10 March.

Please [click here](#) for full detail

Property features

2 Bedrooms | 2 Bathrooms | Reception | 800 sq ft | Patio | EPC-D | Garden Views | Furnished | Communal Garden | South Kensington & Knightsbridge Stations

For more information about this property, please call our Knightsbridge branch on

020 7581 2112

Redress & Client Money Protection :

Benham and Reeves are members of The Property Ombudsman redress scheme and have Client Money protection with ARLA Propertymark. You can find more information on our website at <https://www.benhamandreeves.com/membership/>



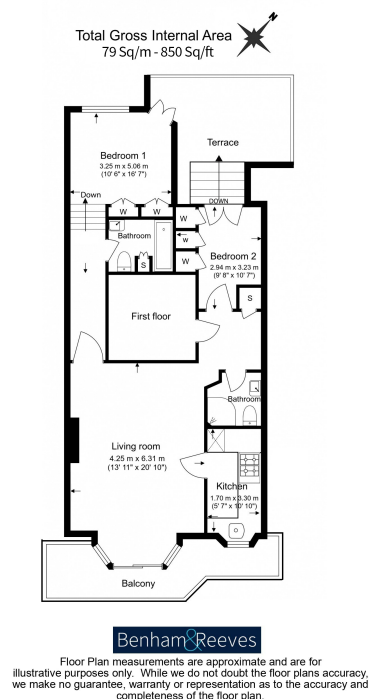
Benham&Reeves



Egerton Gardens, Knightsbridge, SW3

£995 per week, £4,312 per month + fees

www.benhams.com



Score	Energy rating	Current	Potential
92+	A		
81-91	B		81 B
69-80	C		
55-68	D	66 D	
39-54	E		
21-38	F		
1-20	G		

London branches open six days a week Mon - Sat

Canary Wharf | City | Colindale | Dartmouth Park | Ealing | Fulham
Hammersmith | Hampstead | Highgate | Hyde Park | Kensington | Kew
Knightsbridge | Nine Elms | Shoreditch | Southall | Surrey Quays
Wapping | Wembley | White City | Woolwich

International offices

China | Hong Kong SAR | India | Indonesia | Qatar | Malaysia | Middle East | Pakistan
Singapore | South Africa | Thailand | Turkey



Benham & Reeves