



Benham & Reeves

Egerton Gardens, Knightsbridge, SW3

£750 per week, £3,250 per month + fees

🛏️ 2 Bedrooms 🚿 1 Bathroom 🛋️ Furnished

A recently-renovated top floor TWO-BEDROOM luxury apartment located on EGERTON GARDENS in the heart of KNIGHTSBRIDGE with use of gorgeous Communal Gardens. South Kensington Station. The property benefits from a prestigious location, skyline outlook and elegant accommodation.

Please [click here](#) for full detail

Property features

Prime Knightsbridge Location | Elegant Period Building | 2 Bedrooms | 1 Bathroom | Communal Gardens | EPC-D | Top Floor Position | Underfloor Heating | 549 sq ft | South Kensington & Knightsbridge Stations

For more information about this property, please call our Knightsbridge branch on

020 7581 2112

Redress & Client Money Protection :

Benham and Reeves are members of The Property Ombudsman redress scheme and have Client Money protection with ARLA Propertymark. You can find more information on our website at <https://www.benhams.com/membership/>



Benham & Reeves

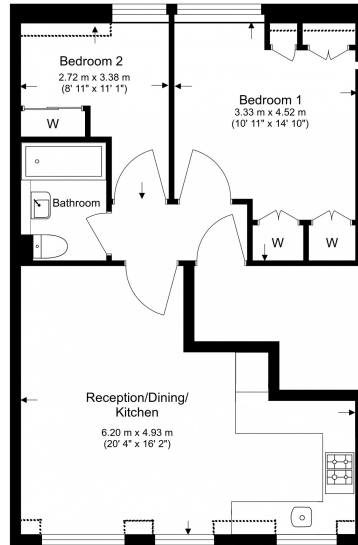


Egerton Gardens, Knightsbridge, SW3

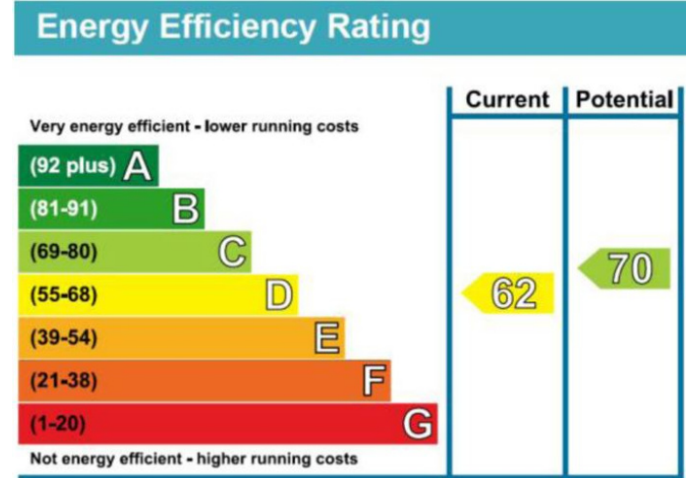
£750 per week, £3,250 per month + fees

www.benhams.com

Total Gross Internal Area
52.3 Sq/m - 563 Sq/ft



Floor Plan measurements are approximate and are for illustrative purposes only. While we do not doubt the floor plans accuracy, we make no guarantee, warranty or representation as to the accuracy and completeness of the floor plan.



London branches open six days a week Mon - Sat

Canary Wharf | City | Colindale | Dartmouth Park | Ealing | Fulham
Hammersmith | Hampstead | Highgate | Hyde Park | Kensington | Kew
Knightsbridge | Nine Elms | Shoreditch | Southall | Surrey Quays
Wapping | Wembley | White City | Woolwich

International offices

China | Hong Kong SAR | India | Indonesia | Qatar | Malaysia | Middle East | Pakistan
Singapore | South Africa | Thailand | Turkey

