



Benham & Reeves

Ovington Court, Knightsbridge SW3

£750 per week, £3,250 per month + fees

 1 Bedroom  1 Bathroom  Furnished

A 958 sq ft ONE-BEDROOM apartment on the first floor of OVINGTON COURT in the heart of KNIGHTSBRIDGE. This spacious property benefits from close proximity to Harrods, South Kensington & Chelsea's popular Walton Street. Ovington Court features a glamorous art deco lobby, lift and daytime Porter.

Please [click here](#) for full detail

Property features

1 Bedroom | 1 Bathroom | Spacious Reception | Furnished | Fully-Fitted Separate Kitchen | EPC-E | Daytime Porter and Lift | Close to Harrods, Beauchamp Place and Sloane Street | Nearby South Kensington(Circle, District & Piccadilly Lines)

For more information about this property, please call our Knightsbridge branch on

020 7581 2112

Redress & Client Money Protection :

Benham and Reeves are members of The Property Ombudsman redress scheme and have Client Money protection with ARLA Propertymark. You can find more information on our website at <https://www.benhams.com/membership/>

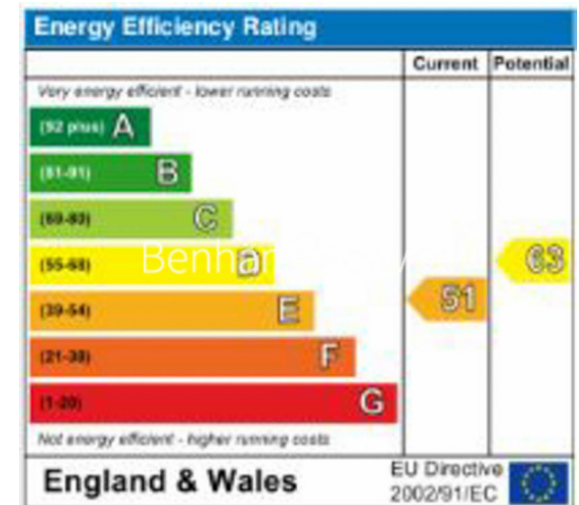
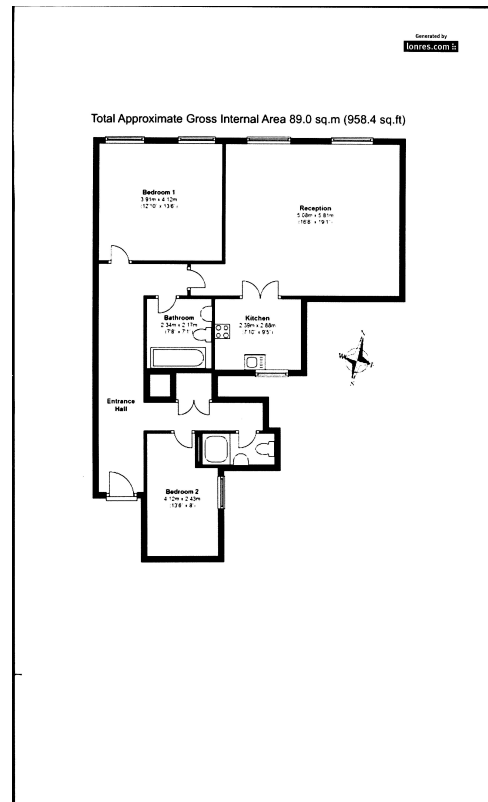


Benham & Reeves

Ovington Court, Knightsbridge SW3

£750 per week, £3,250 per month + fees

www.benhams.com



London branches open six days a week Mon - Sat

Canary Wharf | City | Colindale | Dartmouth Park | Ealing | Fulham
Hammersmith | Hampstead | Highgate | Hyde Park | Kensington | Kew
Knightsbridge | Nine Elms | Shoreditch | Southall | Surrey Quays
Wapping | Wembley | White City | Woolwich

International offices

China | Hong Kong SAR | India | Indonesia | Qatar | Malaysia | Middle East | Pakistan
Singapore | South Africa | Thailand | Turkey

