



Benham & Reeves

Lewis Cubitt Square, Kings Cross, N1C

£1,615 per week, £6,998 per month + fees

 3 Bedrooms  2 Bathrooms  Furnished

This impeccable brand new 3 bedroom apartment is situated in the heart of King's Cross close to the amenities of the West End. The property enjoys an envious location & is conveniently situated nearby Kings Cross underground & rails. EPC-B

Please [click here](#) for full detail

Property features

3 Double Bedroom Apartment with Plenty of Built-in Wardrobes | 2.5 x Luxury Bathrooms (Family & En-Suite Full Bathroom) | Very Bright & Spacious Reception with a Private Terrace | Contemporary Open-Plan Italian Fitted Kitchen with Appliance | Internal Area: 1387 Sq Ft / Charmingly Furnished | EPC-B | Electrically Controllable Window Shutters & Curtains | 24 Hrs 5 Stars Concierge /Underfloor Heating/Air Ventilation | On-Site Residents' Gym / Pool Table / Cineplex | Nearby Kings Cross Underground & Rails

For more information about this property,
please call our White City branch on

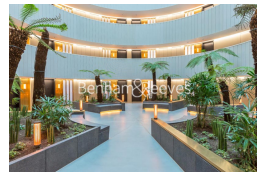
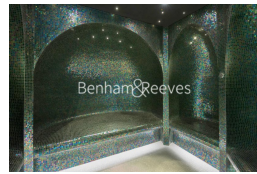
020 8187 0888

Redress & Client Money Protection :

Benham and Reeves are members of The Property Ombudsman redress scheme and have Client Money protection with ARLA Propertymark. You can find more information on our website at <https://www.benhams.com/membership/>



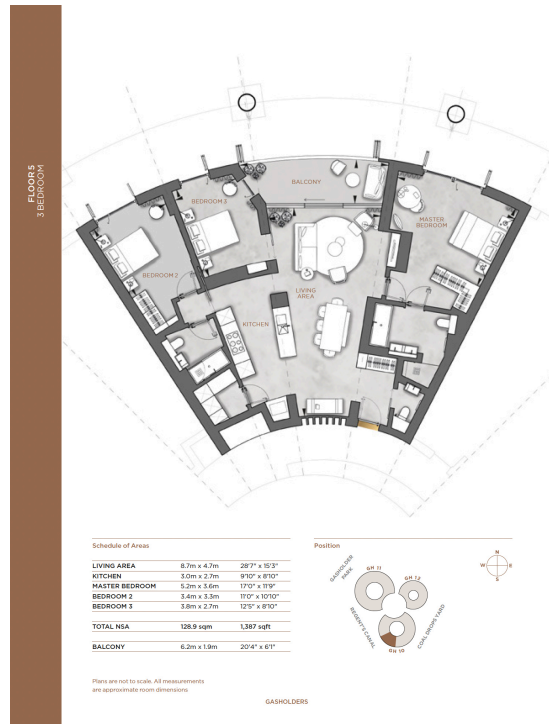
Benham & Reeves



Lewis Cubitt Square, Kings Cross, N1C

£1,615 per week, £6,998 per month + fees

www.benhams.com



Score	Energy rating	Current	Potential
92+	A		
81-91	B	86 B	86 B
69-80	C		
55-68	D		
39-54	E		
21-38	F		
1-20	G		

London branches open six days a week Mon - Sat

Canary Wharf | City | Colindale | Dartmouth Park | Ealing | Fulham
 Hammersmith | Hampstead | Highgate | Hyde Park | Kensington | Kew
 Knightsbridge | Nine Elms | Shoreditch | Southall | Surrey Quays
 Wapping | Wembley | White City | Woolwich

International offices

China | Hong Kong SAR | India | Indonesia | Israel | Malaysia | Middle East | Pakistan
 Qatar | Singapore | South Africa | Thailand | Turkey

