



Benham & Reeves

Pegler Square, Kidbrooke, SE3

£554 per week, £2,401 per month + fees

 2 Bedrooms  2 Bathrooms  Furnished

Bright and spacious 9th floor apartment surrounded by over 86 acres of open parkland located in a popular London Royal Borough. Kidbrooke station is on-site (Zone 3).

Please [click here](#) for full detail

Property features

Spacious 2 bed 2 bath furnished flat | Private large balcony overlooking park | Onsite Gymnasium | Onsite supermarket, doctors, dentist, pharmacy | Close to green spaces, landscapes and meadows | EPC-B | Next to Sutcliffe park | Onsite Sainsbury and The Depot pub | 24 hours concierge with CCTV security | Next to Kidbrooke train station

For more information about this property,
please call our Woolwich branch on

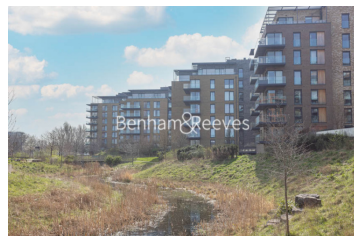
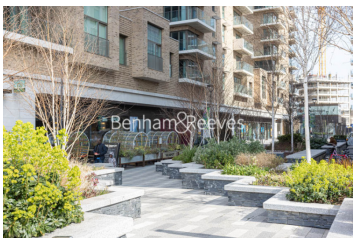
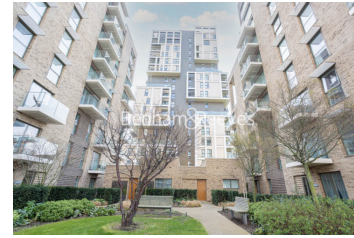
020 8051 0700

Redress & Client Money Protection :

Benham and Reeves are members of The Property Ombudsman redress scheme and have Client Money protection with ARLA Propertymark. You can find more information on our website at <https://www.benhams.com/membership/>



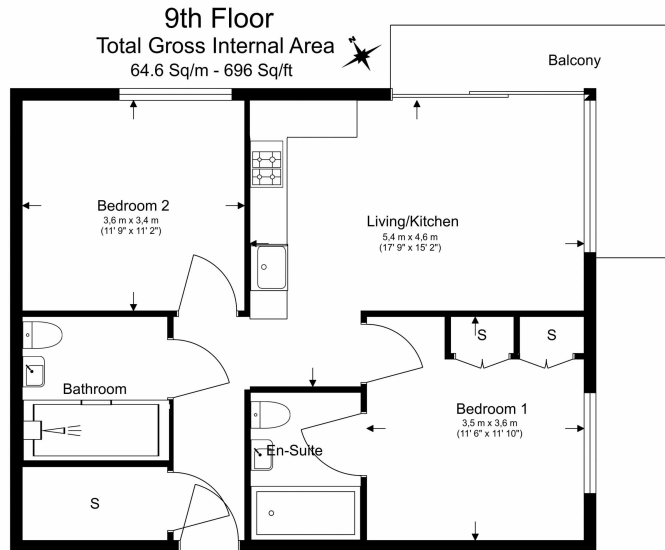
Benham & Reeves



Pegler Square, Kidbrooke, SE3

£554 per week, £2,401 per month + fees

www.benhams.com



Floor Plan measurements are approximate and are for illustrative purposes only. While we do not doubt the floor plans accuracy, we make no guarantee, warranty or representation as to the accuracy and completeness of the floor plan.

Score	Energy rating	Current	Potential
92+	A		
81-91	B	84 B	84 B
69-80	C		
55-68	D		
39-54	E		
21-38	F		
1-20	G		

London branches open six days a week Mon - Sat

Canary Wharf | City | Colindale | Dartmouth Park | Ealing | Fulham
Hammersmith | Hampstead | Highgate | Hyde Park | Kensington | Kew
Knightsbridge | Nine Elms | Shoreditch | Southall | Surrey Quays
Wapping | Wembley | White City | Woolwich

International offices

China | Hong Kong SAR | India | Indonesia | Qatar | Malaysia | Middle East | Pakistan
Singapore | South Africa | Thailand | Turkey

