



Benham & Reeves

Lancer Square, Kensington, W8

£1,600 per week, £6,933 per month + fees

 1 Bedroom  1 Bathroom  Furnished

A substantial, elegant apartment situated in a stunning luxury development, with exclusive health club, located in a desirable conservation area amongst palaces and minutes from Kensington High Street Station.

Please [click here](#) for full detail

Property features

One Bedroom | One Bathroom | Large Open Plan Kitchen | Living Area | Fully Furnished | EPC-B | Private Health Club for Residents | Large Swimming Pool | Gym and a 24 Hour Concierge | Nearby Edgware Road Underground Station

For more information about this property, please call our Kensington branch on

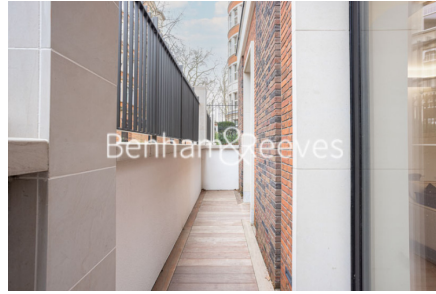
020 7938 3522

Redress & Client Money Protection :

Benham and Reeves are members of The Property Ombudsman redress scheme and have Client Money protection with ARLA Propertymark. You can find more information on our website at <https://www.benhams.com/membership/>



Benham & Reeves

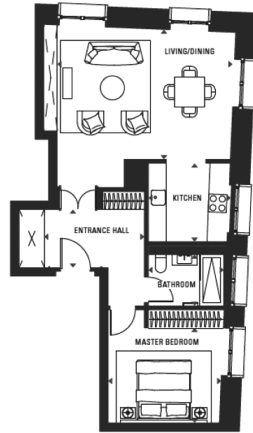


Lancer Square, Kensington, W8

£1,600 per week, £6,933 per month + fees

www.benhams.com

Ground Floor Floor
Approx gross internal area: 766sq/ft - 71sq/m



ENTRANCE HALL	3.3M x 1.9M	10'10" x 6'3"
LIVING/DINING	5.8M x 4.3M	19'0" x 14'1"
KITCHEN	2.6M x 2.5M	8'10" x 8'6"
MASTER BEDROOM	3.6M x 3.1M	12'6" x 10'2"
BATHROOM	2.5M x 1.7M	8'2" x 5'7"

Whilst every attempt has been made to ensure the accuracy of the floor plan contained here, measurements of doors, windows, rooms and any other items are approximate and no responsibility is taken for any error, omission, or mis-statement. This plan is for illustrative purposes only and should be used as such by any prospective purchaser. The services, systems and appliances shown have not been tested and no guarantee as to their operability or efficiency can be given.
Made with Metropix 62018

Score	Energy rating	Current	Potential
92+	A		
81-91	B	84 B	84 B
69-80	C		
55-68	D		
39-54	E		
21-38	F		
1-20	G		

London branches open six days a week Mon - Sat

Canary Wharf | City | Colindale | Dartmouth Park | Ealing | Fulham
Hammersmith | Hampstead | Highgate | Hyde Park | Kensington | Kew
Knightsbridge | Nine Elms | Shoreditch | Southall | Surrey Quays
Wapping | Wembley | White City | Woolwich

International offices

China | Hong Kong SAR | India | Indonesia | Qatar | Malaysia | Middle East | Pakistan
Singapore | South Africa | Thailand | Turkey

