



Benham & Reeves

Lexham Gardens, Kensington, W8

£2,300 per week, £9,967 per month + fees

 4 Bedrooms  5 Bathrooms  Furnished

A spacious, fully refurbished furnished split-level apartment, with large South facing Garden situated in a striking stucco building in Kensington. A five-minute walk from High Street Kensington Underground station (Circle and District Lines).

Please [click here](#) for full detail

Property features

Four Bedrooms | Five Bathrooms | One Reception | Furnished | Pet Friendly | EPC-C | South Facing | Wood Flooring | Modern Finishes | Nearby High Street Kensington Underground station

For more information about this property,
please call our Kensington branch on

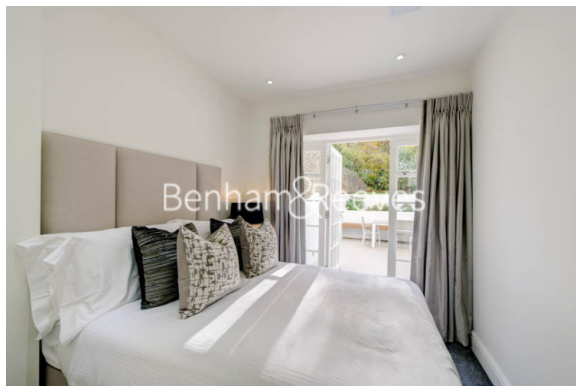
020 7938 3522

Redress & Client Money Protection :

Benham and Reeves are members of The Property Ombudsman redress scheme and have Client Money protection with ARLA Propertymark. You can find more information on our website at <https://www.benhams.com/membership/>



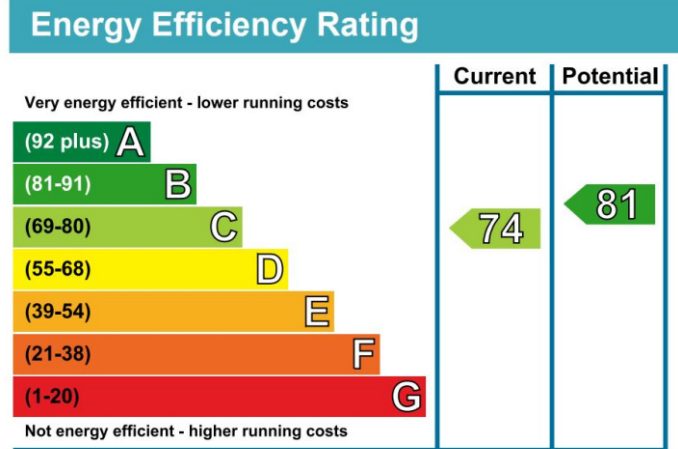
Benham & Reeves



Lexham Gardens, Kensington, W8

£2,300 per week, £9,967 per month + fees

www.benhams.com



London branches open six days a week Mon - Sat

Canary Wharf | City | Colindale | Dartmouth Park | Ealing | Fulham
Hammersmith | Hampstead | Highgate | Hyde Park | Kensington | Kew
Knightsbridge | Nine Elms | Shoreditch | Southall | Surrey Quays
Wapping | Wembley | White City | Woolwich

International offices

China | Hong Kong SAR | India | Indonesia | Qatar | Malaysia | Middle East | Pakistan
Singapore | South Africa | Thailand | Turkey

