



Benham & Reeves

## Kensington Court, Kensington, W8

£650 per week, £2,817 per month + fees

🛏 1 Bedroom    🚿 1 Bathroom    🚗 Furnished

A stunning, large 4th floor situated in a well-maintained portered building just South of Kensington High Street. Close to Kensington Gardens.

Please [click here](#) for full detail

## Property features

**Large reception | Exclusive Kensington location | Furnished | Lift | Porter | EPC-D | Located on the first floor | Moments from Kensington High Street | High Street Kensington Station**

For more information about this property, please call our Kensington branch on

**020 7938 3522**

Redress & Client Money Protection :

Benham and Reeves are members of The Property Ombudsman redress scheme and have Client Money protection with ARLA Propertymark. You can find more information on our website at <https://www.benhams.com/membership/>



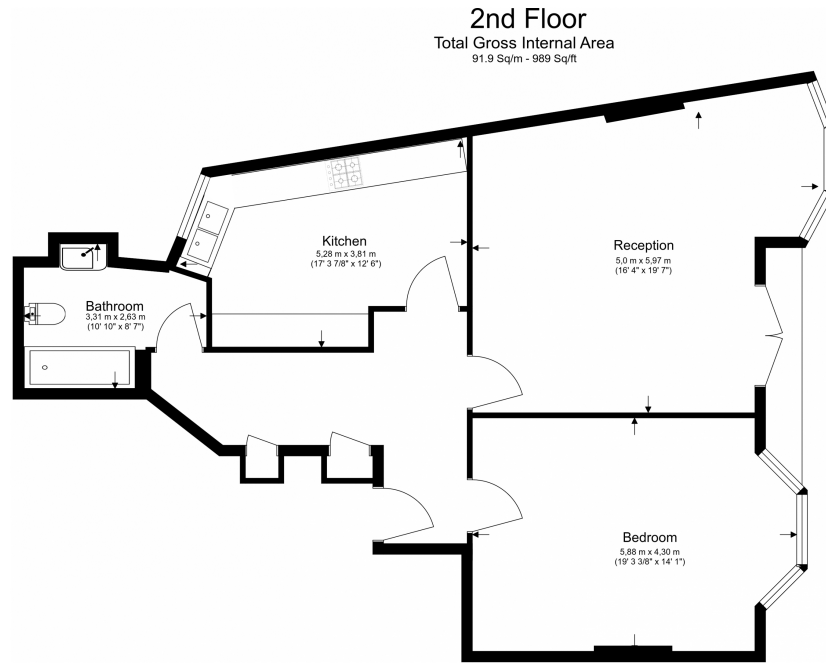
Benham & Reeves



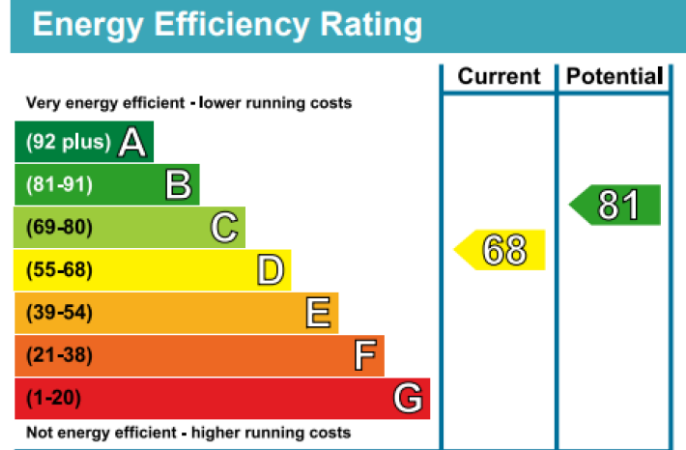
# Kensington Court, Kensington, W8

£650 per week, £2,817 per month + fees

www.benhams.com



Floor Plan measurements are approximate and are for illustrative purposes only. While we do not doubt the floor plans accuracy, we make no guarantee, warranty or representation as to the accuracy and completeness of the floor plan.



## London branches open six days a week Mon - Sat

Canary Wharf | City | Colindale | Dartmouth Park | Ealing | Fulham  
Hammersmith | Hampstead | Highgate | Hyde Park | Kensington | Kew  
Knightsbridge | Nine Elms | Shoreditch | Southall | Surrey Quays  
Wapping | Wembley | White City | Woolwich

## International offices

China | Hong Kong SAR | India | Indonesia | Qatar | Malaysia | Middle East | Pakistan  
Singapore | South Africa | Thailand | Turkey

