



Benham & Reeves

Cheniston Gardens, Kensington, W8

£5,769 per week, £24,999 per month + fees

 6 Bedrooms  6 Bathrooms  Furnished

Exquisite property situated in a Grade II listed house in the heart of Kensington, close to the open spaces of Hyde Park, Kensington Gardens, and minutes from High Street Kensington Tube Station.

Please [click here](#) for full detail

Property features

Six Bedrooms | Six Bathrooms | Open Plan Living Area | Under floor heating | Self contained | EPC-D | Outdoor space | Gym | Air conditioning | Nearby High Street Kensington Tube Station

For more information about this property, please call our Kensington branch on

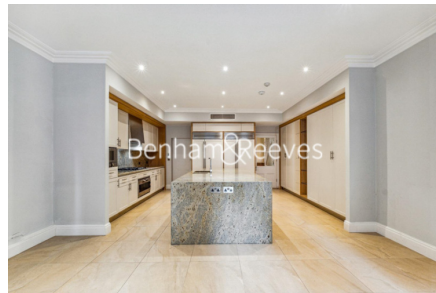
020 7938 3522

Redress & Client Money Protection :

Benham and Reeves are members of The Property Ombudsman redress scheme and have Client Money protection with ARLA Propertymark. You can find more information on our website at <https://www.benhams.com/membership/>



Benham & Reeves



Cheniston Gardens, Kensington, W8

£5,769 per week, £24,999 per month + fees

www.benhams.com

Score	Energy rating	Current	Potential
92+	A		
81-91	B		
69-80	C		79 C
55-68	D	61 D	
39-54	E		
21-38	F		
1-20	G		

London branches open six days a week Mon - Sat

Canary Wharf | City | Colindale | Dartmouth Park | Ealing | Fulham
Hammersmith | Hampstead | Highgate | Hyde Park | Kensington | Kew
Knightsbridge | Nine Elms | Shoreditch | Southall | Surrey Quays
Wapping | Wembley | White City | Woolwich

International offices

China | Hong Kong SAR | India | Indonesia | Qatar | Malaysia | Middle East | Pakistan
Singapore | South Africa | Thailand | Turkey

