



Benham & Reeves

## Young Street, Kensington, W8

£1,600 per week, £6,933 per month + fees

 2 Bedrooms    2 Bathrooms    Furnished

Stunning duplex apartment based in the heart of Kensington offering top class amenities and the ultimate sophisticated modern living.

Please [click here](#) for full detail

## Property features

**Two Bedrooms | Two Bathrooms | 24-hour security | Gym | Close to local amenities | EPC-B | Library | Open plan living | Air Conditioning | Short walk to underground stations**

For more information about this property, please call our Kensington branch on

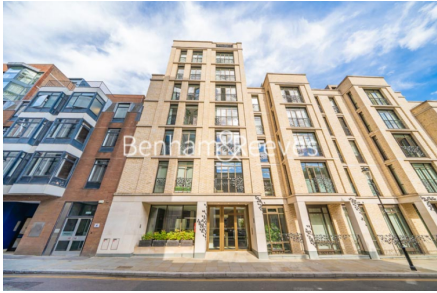
**020 7938 3522**

Redress & Client Money Protection :

Benham and Reeves are members of The Property Ombudsman redress scheme and have Client Money protection with ARLA Propertymark. You can find more information on our website at <https://www.benhams.com/membership/>



Benham & Reeves



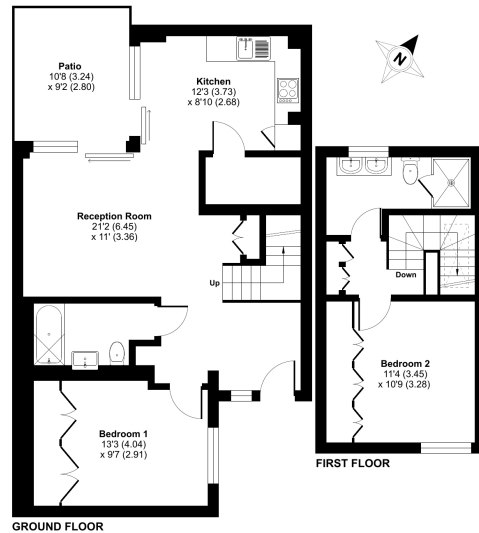
# Young Street, Kensington, W8

£1,600 per week, £6,933 per month + fees

www.benhams.com

## Young Street, The Gardens, London, W8

Approximate Area = 655 sq ft / 79.4 sq m  
For identification only - Not to scale



Floor plan produced in accordance with RICS Property Measurement Standards incorporating International Property Measurement Standards (IPMS) (Residential). © Benham & Reeves 2024. REF: 175487

Score	Energy rating	Current	Potential
92+	A		
81-91	B	83 B	83 B
69-80	C		
55-68	D		
39-54	E		
21-38	F		
1-20	G		

## London branches open six days a week Mon - Sat

Canary Wharf | City | Colindale | Dartmouth Park | Ealing | Fulham  
Hammersmith | Hampstead | Highgate | Hyde Park | Kensington | Kew  
Knightsbridge | Nine Elms | Shoreditch | Southall | Surrey Quays  
Wapping | Wembley | White City | Woolwich

## International offices

China | Hong Kong SAR | India | Indonesia | Qatar | Malaysia | Middle East | Pakistan  
Singapore | South Africa | Thailand | Turkey

