



Benham & Reeves

## Kensington Court Mansions, Kensington, W8

£1,075 per week, £4,658 per month + fees

 3 Bedrooms    2 Bathrooms    Part-furnished

An extremely spacious apartment set within a large red brick Victorian building in this quiet, prime location just off High Street Kensington and only 100 yards from Hyde Park.

Please [click here](#) for full detail

## Property features

**3 Bedrooms | 2 Bathrooms | Reception Room | Part Furnished | Separate Kitchen | EPC-E | Prime location | Excellent storage | Wood flooring | Nearby High Street Kensington Tube Station**

For more information about this property,  
please call our Kensington branch on

**020 7938 3522**

Redress & Client Money Protection :

Benham and Reeves are members of The Property Ombudsman redress scheme and have Client Money protection with ARLA Propertymark. You can find more information on our website at <https://www.benhams.com/membership/>



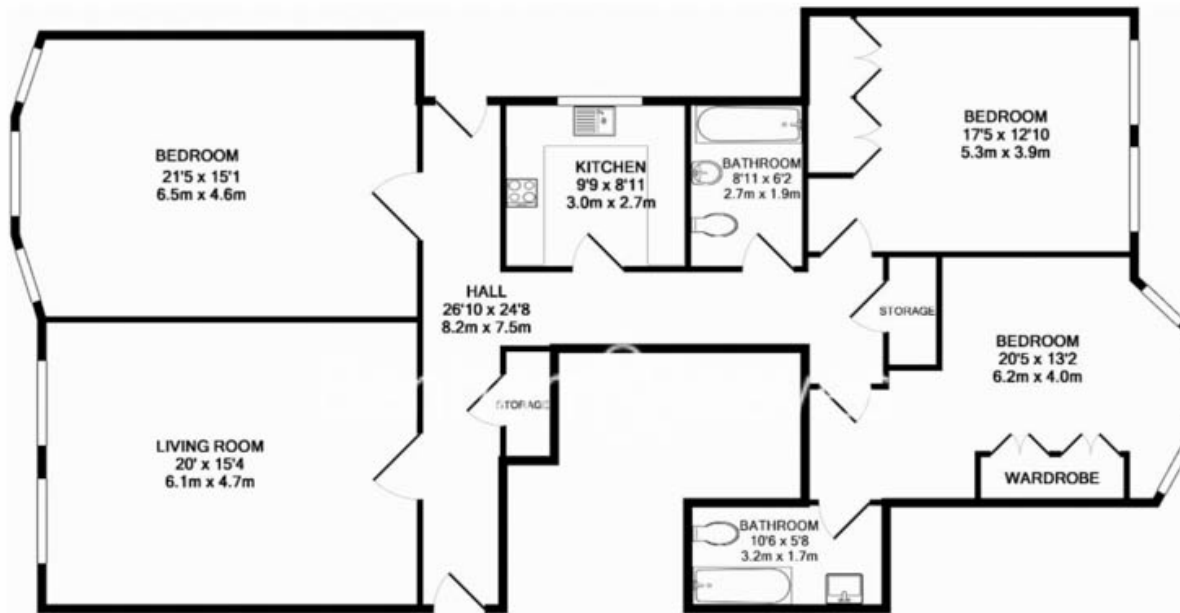
**Benham & Reeves**



# Kensington Court Mansions, Kensington, W8

£1,075 per week, £4,658 per month + fees

www.benhams.com



KENSINGTON COURT MANSIONS, W8  
TOTAL APPROX. FLOOR AREA 1504 SQ.FT. (139.7 SQ.M.)  
Whilst every attempt has been made to ensure the accuracy of the floor plan contained here, measurements of doors, windows, rooms and any other items are approximate and no responsibility is taken for any error, omission, or mis-statement. This plan is for illustrative purposes only and should be used as such by any prospective purchaser. The services, systems and appliances shown have not been tested and no guarantee as to their operability or efficiency can be given.  
Made with Metropix ©2013

| Energy Efficiency Rating                    |                 | Current                 | Potential |
|---|-----------------|-------------------------|-----------|
| Very energy efficient - lower running costs |                 |                         |           |
| (92 plus) A                                 |                 |                         |           |
| (81-91) B                                   |                 |                         |           |
| (69-80) C                                   |                 |                         |           |
| (55-68) D                                   | Benham & Reeves | 62                      | 74        |
| (39-54) E                                   |                 |                         |           |
| (21-38) F                                   |                 |                         |           |
| (1-20) G                                    |                 |                         |           |
| Not energy efficient - higher running costs |                 |                         |           |
| <b>England &amp; Wales</b>                  |                 | EU Directive 2002/91/EC |           |

## London branches open six days a week Mon - Sat

Canary Wharf | City | Colindale | Dartmouth Park | Ealing | Fulham  
Hammersmith | Hampstead | Highgate | Hyde Park | Kensington | Kew  
Knightsbridge | Nine Elms | Shoreditch | Southall | Surrey Quays  
Wapping | Wembley | White City | Woolwich



## International offices

China | Hong Kong SAR | India | Indonesia | Qatar | Malaysia | Middle East | Pakistan  
Singapore | South Africa | Thailand | Turkey

Benham & Reeves