



Benham & Reeves

**Young Street, Kensington, W8**

£1,390 per week, £6,023 per month + fees

 2 Bedrooms    2 Bathrooms     
Furnished/UnFurnished

A bright and modern 4th floor, air-conditioned apartment, with lift access, set in a modern residential building in the heart of Kensington, close to the amenities of Kensington High Street and the open spaces of Kensington Gardens. Perfectly located for High Street Kensington Tube Station (District & Circle Lines).

Please [click here](#) for full detail

## Property features

**2 Bedrooms | Porter | Available Furnished or Unfurnished | Desirable location | CCTV | EPC-C | 24 Hour Emergency Helpline & Service | Close to Amenities | Nearby High Street Kensington Tube station**

For more information about this property,  
please call our Kensington branch on

**020 7938 3522**

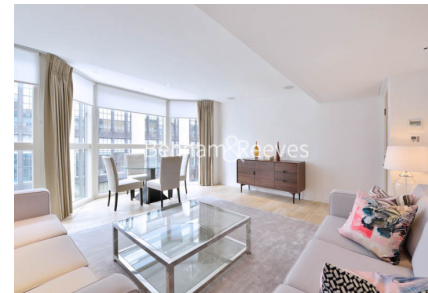
Redress & Client Money Protection :

Benham and Reeves are members of The Property Ombudsman redress scheme and have Client Money protection with ARLA Propertymark. You can find more information on our website at <https://www.benhams.com/membership/>



**Benham & Reeves**

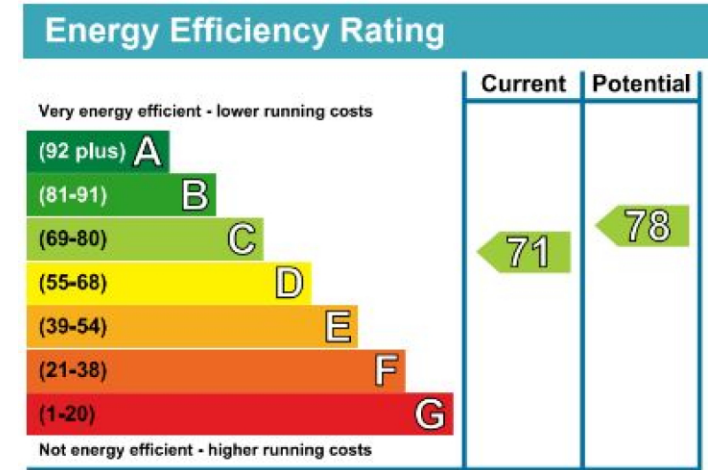




# Young Street, Kensington, W8

£1,390 per week, £6,023 per month + fees

www.benhams.com



## London branches open six days a week Mon - Sat

Canary Wharf | City | Colindale | Dartmouth Park | Ealing | Fulham  
 Hammersmith | Hampstead | Highgate | Hyde Park | Kensington | Kew  
 Knightsbridge | Nine Elms | Shoreditch | Southall | Surrey Quays  
 Wapping | Wembley | White City | Woolwich

## International offices

China | Hong Kong SAR | India | Indonesia | Israel | Malaysia | Middle East | Pakistan  
 Qatar | Singapore | South Africa | Thailand | Turkey

