



Benham & Reeves

Radnor Terrace, Kensington, W14

£1,500 per week, £6,500 per month + fees

 3 Bedrooms  2 Bathrooms 
Furnished/UnFurnished

Stylish and tastefully presented large 5th floor apartment situated in a prestigious development with luxury amenities. Located within walking distance from Kensington Olympia Underground and Overground Stations.

Please [click here](#) for full detail

Property features

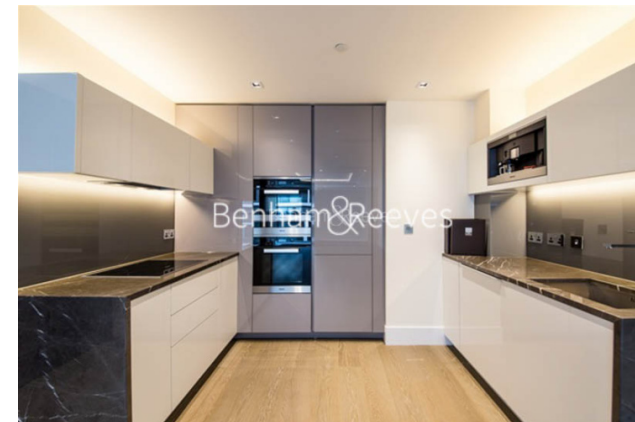
3 Bedrooms | 2 Bathrooms | Reception | Furn/Unfurn | Fitted Kitchen | EPC-B | 24h Concierge | Leisure center | Nearby Kensington Olympia Station

For more information about this property,
please call our Kensington branch on

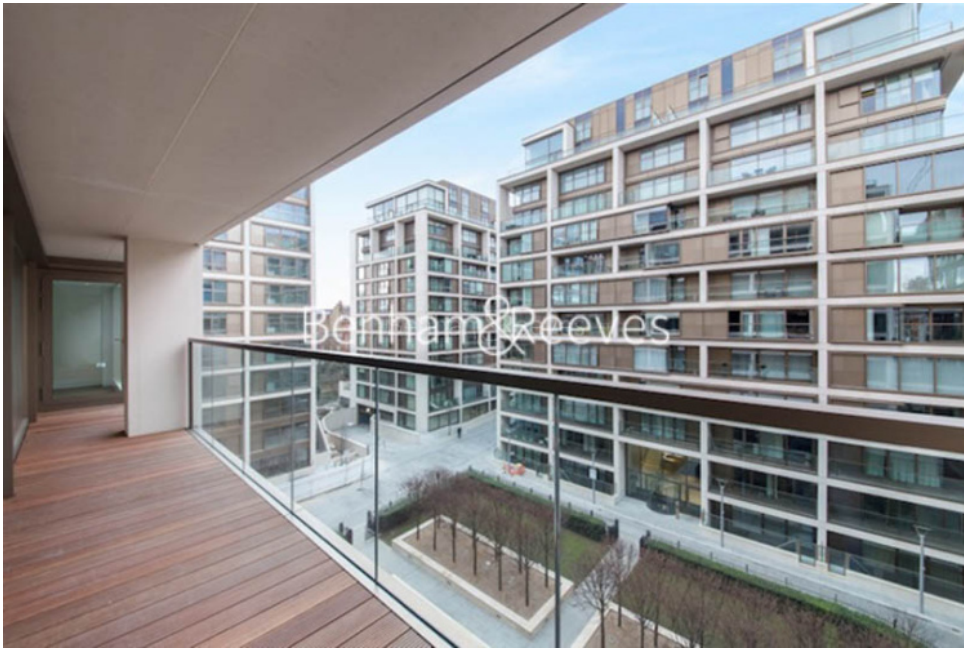
020 7938 3522

Redress & Client Money Protection :

Benham and Reeves are members of The Property Ombudsman redress scheme and have Client Money protection with ARLA Propertymark. You can find more information on our website at <https://www.benhams.com/membership/>



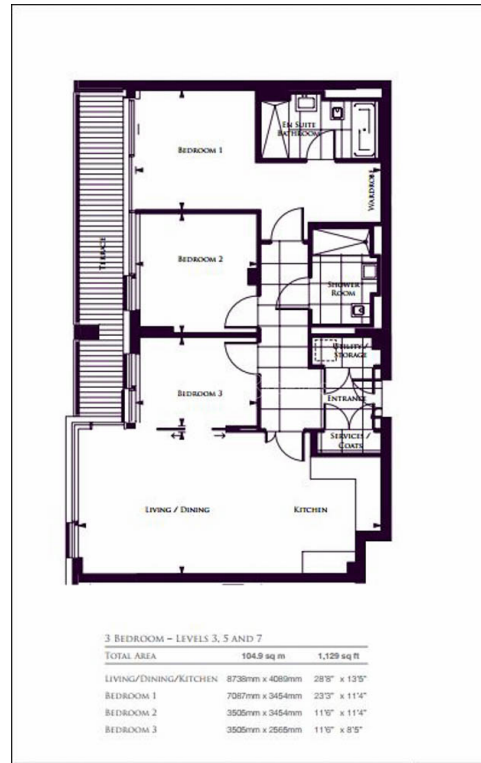
Benham & Reeves



Radnor Terrace, Kensington, W14

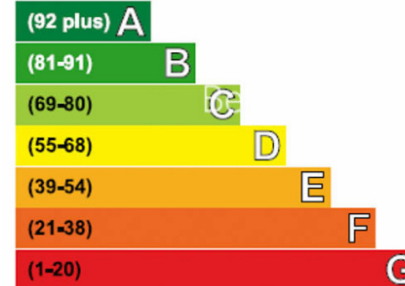
£1,500 per week, £6,500 per month + fees

www.benhams.com



Energy Efficiency Rating

Very energy efficient - lower running costs



Current	Potential
85	85

Not energy efficient - higher running costs

London branches open six days a week Mon - Sat

Canary Wharf | City | Colindale | Dartmouth Park | Ealing | Fulham
Hammersmith | Hampstead | Highgate | Hyde Park | Kensington | Kew
Knightsbridge | Nine Elms | Shoreditch | Southall | Surrey Quays
Wapping | Wembley | White City | Woolwich

International offices

China | Hong Kong SAR | India | Indonesia | Qatar | Malaysia | Middle East | Pakistan
Singapore | South Africa | Thailand | Turkey

