



Benham & Reeves

**Holland Park, Kensington, W11**

£5,600 per week, £24,267 per month + fees

 5 Bedrooms    5 Bathrooms    Furnished

A large, spacious luxury Maisonette with garden, situated one of the most sought after addresses close to Holland Park Station (Central Line).

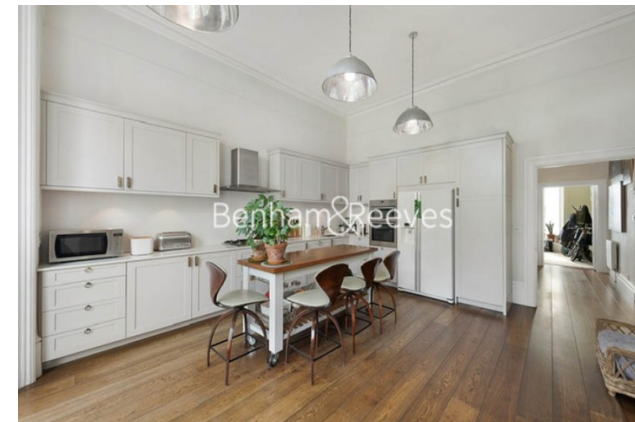
Please [click here](#) for full detail

## Property features

**Holland Park | Garden | Perfect for Families | Dining Room | Great nearby Schools | EPC-D | Recently Decorated | 5 Bedrooms And 5 Bathrooms | 2 Receptions | Holland Park station (Central Line) and Notting Hill Gate**

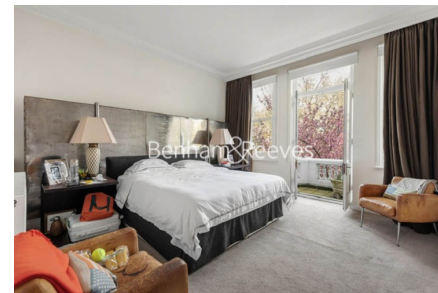
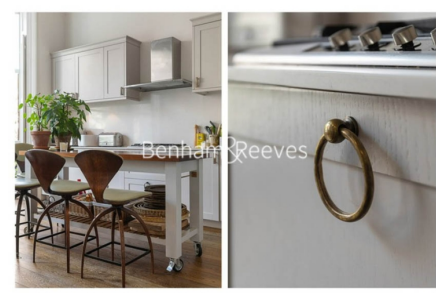
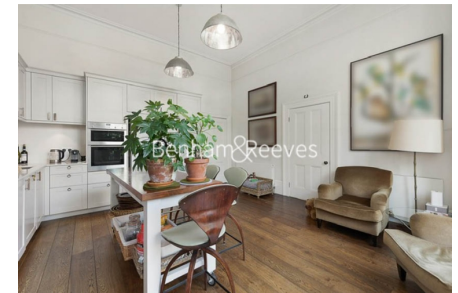
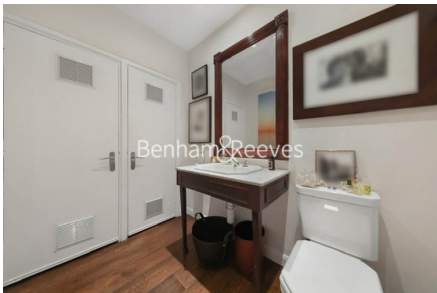
For more information about this property,  
please call our Kensington branch on

**020 7938 3522**



Redress & Client Money Protection :  
Benham and Reeves are members of The Property Ombudsman redress scheme and have Client Money protection with ARLA Propertymark.  
You can find more information on our website at <https://www.benhams.com/membership/>

**Benham & Reeves**



# Holland Park, Kensington, W11

£5,600 per week, £24,267 per month + fees

www.benhams.com

Score	Energy rating	Current	Potential
92+	A		
81-91	B		83   B
69-80	C		
55-68	D	55   D	
39-54	E		
21-38	F		
1-20	G		

## London branches open six days a week Mon - Sat

Canary Wharf | City | Colindale | Dartmouth Park | Ealing | Fulham  
 Hammersmith | Hampstead | Highgate | Hyde Park | Kensington | Kew  
 Knightsbridge | Nine Elms | Shoreditch | Southall | Surrey Quays  
 Wapping | Wembley | White City | Woolwich

## International offices

China | Hong Kong SAR | India | Indonesia | Qatar | Malaysia | Middle East | Pakistan  
 Singapore | South Africa | Thailand | Turkey

