



Benham & Reeves

Wolfe House, Kensington High Street, W14

£1,000 per week, £4,333 per month + fees

 2 Bedrooms  2 Bathrooms  Furnished

Spacious 8th floor apartment situated within an exclusive development in West Kensington, one of the most coveted areas of London. Perfectly located near Kensington Olympia (District Line) Underground and overground stations.

Please [click here](#) for full detail

Property features

Two Bedroom | Two Bathroom | 24-hour concierge | Designated underground parking | Close to local amenities | EPC-TBC | Gym | Cinema Room | Spa | Short walk to underground stations

For more information about this property, please call our Kensington branch on

020 7938 3522

Redress & Client Money Protection :

Benham and Reeves are members of The Property Ombudsman redress scheme and have Client Money protection with ARLA Propertymark. You can find more information on our website at <https://www.benhams.com/membership/>



Benham & Reeves

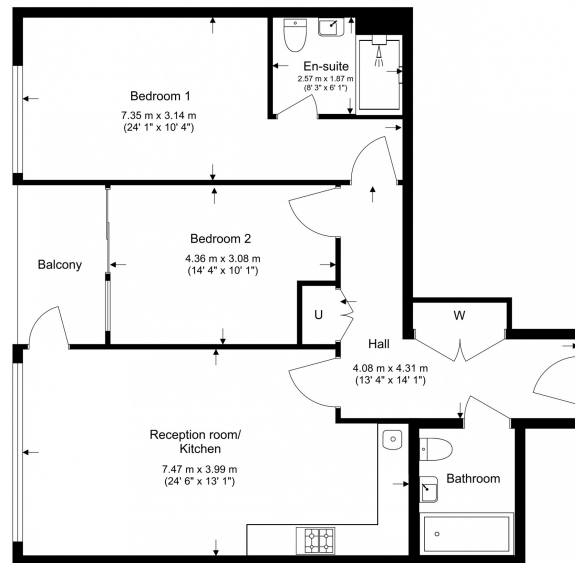


Wolfe House, Kensington High Street, W14

£1,000 per week, £4,333 per month + fees

www.benhams.com

Total Gross Internal Area
83.4 Sq/m - 897 Sq/ft



Floor Plan measurements are approximate and are for illustrative purposes only. While we do not doubt the floor plans accuracy, we make no guarantee, warranty or representation as to the accuracy and completeness of the floor plan.

London branches open six days a week Mon - Sat

Canary Wharf | City | Colindale | Dartmouth Park | Ealing | Fulham
Hammersmith | Hampstead | Highgate | Hyde Park | Kensington | Kew
Knightsbridge | Nine Elms | Shoreditch | Southall | Surrey Quays
Wapping | Wembley | White City | Woolwich

International offices

China | Hong Kong SAR | India | Indonesia | Qatar | Malaysia | Middle East | Pakistan
Singapore | South Africa | Thailand | Turkey



Benham & Reeves