



Benham & Reeves

Barnsbury Place, Islington, N1

£508 per week, £2,201 per month + fees

 1 Bedroom  1 Bathroom  Unfurnished

A well-presented duplex apartment set on the 1st floor of this beautiful development, close to the amenities of Islington and Angel. The property is within walking distance to Highbury & Islington (Victoria Line) underground and Overground.

Please [click here](#) for full detail

Property features

1 Double Bedroom | Luxury Bathroom and Separate Guest WC | Open plan reception | Fully Fitted Modern Kitchen | Unfurnished | EPC-C | 24 Hours Concierge, Secured and Gated | Communal Garden | Nearby Highbury and Islington and Angel Stations

For more information about this property,
please call our Highgate branch on

020 8341 2335

Redress & Client Money Protection :

Benham and Reeves are members of The Property Ombudsman redress scheme and have Client Money protection with ARLA Propertymark. You can find more information on our website at <https://www.benhams.com/membership/>



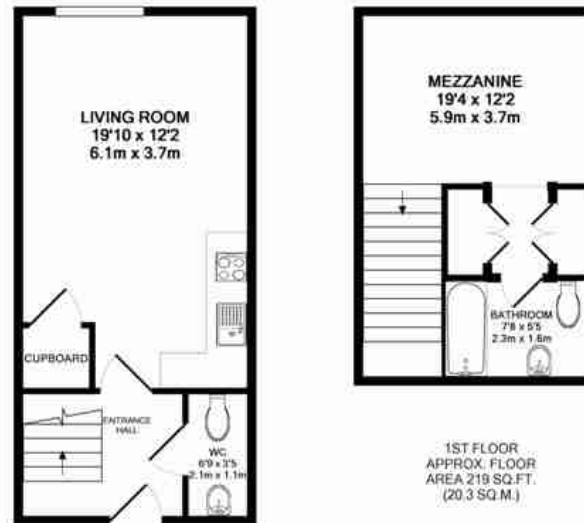
Benham & Reeves



Barnsbury Place, Islington, N1

£508 per week, £2,201 per month + fees


www.benhams.com



GROUND FLOOR
APPROX. FLOOR
AREA 324 SQ.FT.
(30.1 SQ.M.)

DRUMMOND WAY, BARNSBURY PLACE, GORE HOUSE, N1 1NR
TOTAL APPROX. FLOOR AREA 543 SQ.FT. (50.5 SQ.M.)

Whilst every attempt has been made to ensure the accuracy of the floor plan contained here, measurements of doors, windows, rooms and any other items are approximate and no responsibility is taken for any error, omission, or mis-statement. This plan is for illustrative purposes only and should be used as such by any prospective purchaser. The services, systems and appliances shown have not been tested and no guarantee as to their operability or efficiency can be given.
Made with Metropix ©2013

Energy Efficiency Rating		
	Current	Potential
Very energy efficient - lower running costs		
(92-plus) A		
(81-91) B		
(69-80) C		
(55-68) D	65	65
(39-54) E		
(21-38) F		
(1-20) G		
Not energy efficient - higher running costs		
England & Wales	EU Directive 2002/91/EC 	

London branches open six days a week Mon - Sat

Canary Wharf | City | Colindale | Dartmouth Park | Ealing | Fulham
Hammersmith | Hampstead | Highgate | Hyde Park | Kensington | Kew
Knightsbridge | Nine Elms | Shoreditch | Southall | Surrey Quays
Wapping | Wembley | White City | Woolwich

International offices

China | Hong Kong SAR | India | Indonesia | Qatar | Malaysia | Middle East | Pakistan
Singapore | South Africa | Thailand | Turkey

