



Benham & Reeves

The Boulevard, Imperial Wharf, SW6

£854 per week, £3,701 per month + fees

 3 Bedrooms  3 Bathrooms  Unfurnished

A smart and spacious 4th floor apartment, with lift access and negotiable secure parking, situated in an impressive and sought-after development in Fulham, moments from Imperial Wharf Overground station

Please [click here](#) for full detail

Property features

3 Double Bedrooms with Built-in Wardrobe | Large Reception Room with Dining Area | 24 H Concierge / Communal Garden/ 24 H Security | Large Balcony | Resident's Gym | EPC-B | 3 Bathrooms / 2 En-suite | Air Conditioning | Furnished | Nearby Imperial Wharf Overground station

For more information about this property,
please call our Fulham branch on

020 7348 7620

Redress & Client Money Protection :

Benham and Reeves are members of The Property Ombudsman redress scheme and have Client Money protection with ARLA Propertymark. You can find more information on our website at <https://www.benhams.com/membership/>



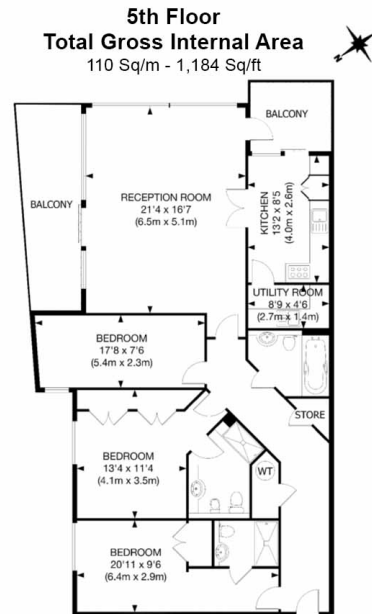
Benham & Reeves



The Boulevard, Imperial Wharf, SW6

£854 per week, £3,701 per month + fees

www.benhams.com



Floor Plan measurements are approximate and are for illustrative purposes only. While we do not doubt the floor plans accuracy, we make no guarantee, warranty or representation as to the accuracy and completeness of the floor plan.

Score	Energy rating	Current	Potential
92+	A		
81-91	B	84 B	86 B
69-80	C		
55-68	D		
39-54	E		
21-38	F		
1-20	G		

London branches open six days a week Mon - Sat

Canary Wharf | City | Colindale | Dartmouth Park | Ealing | Fulham
Hammersmith | Hampstead | Highgate | Hyde Park | Kensington | Kew
Knightsbridge | Nine Elms | Shoreditch | Southall | Surrey Quays
Wapping | Wembley | White City | Woolwich

International offices

China | Hong Kong SAR | India | Indonesia | Qatar | Malaysia | Middle East | Pakistan
Singapore | South Africa | Thailand | Turkey

