



Benham & Reeves

Octavia House, Imperial Wharf, SW6

£496 per week, £2,150 per month + fees

 1 Bedroom  1 Bathroom  Furnished

Stunning and modern apartment set on the fourth floor of Octavia House, situated in the Imperial Wharf Riverside development in the heart of Fulham, fitted with additional storage, high-end furniture and exceptionally bright

Please [click here](#) for full detail

Property features

Gym included | High quality modern furniture | 24 Hr Concierge / 24 Hr Security / Communal Gardens | Fully Fitted Kitchen Integrated with Well-Known Appliances | Luxurious bathroom with ample storage | EPC-B | Lifts | Near to supermarkets | A 2 minute walk to the Thames River | Nearby Imperial Wharf Overground Station

For more information about this property,
please call our Fulham branch on

020 7348 7620

Redress & Client Money Protection :

Benham and Reeves are members of The Property Ombudsman redress scheme and have Client Money protection with ARLA Propertymark. You can find more information on our website at <https://www.benhams.com/membership/>



Benham&Reeves



Octavia House, Imperial Wharf, SW6

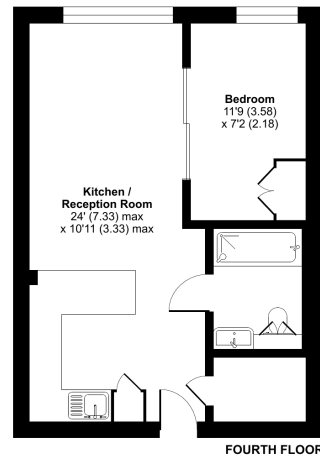
£496 per week, £2,150 per month + fees

www.benhams.com



Townmead Road, London, SW6

Approximate Area = 419 sq ft / 39 sq m
For identification only - Not to scale



ⓘ Floor plan produced in accordance with RICS Property Measurement 2nd Edition, incorporating International Property Measurement Standards (IPMS Residential). © rchecom 2025. Produced for Benham & Reeves. REF: 1276255

London branches open six days a week Mon - Sat

Canary Wharf | City | Colindale | Dartmouth Park | Ealing | Fulham
Hammersmith | Hampstead | Highgate | Hyde Park | Kensington | Kew
Knightsbridge | Nine Elms | Shoreditch | Southall | Surrey Quays
Wapping | Wembley | White City | Woolwich

International offices

China | Hong Kong SAR | India | Indonesia | Qatar | Malaysia | Middle East | Pakistan
Singapore | South Africa | Thailand | Turkey



Benham & Reeves