



Benham & Reeves

Thurstan Street, Imperial Wharf, SW6

£1,050 per week, £4,550 per month + fees

 2 Bedrooms  2 Bathrooms  Furnished

A modern and stylish second floor apartment situated in a highly sought-after Riverside development. close to the famous Kings Road. A brief walk to Imperial Wharf Rail Station.

Please [click here](#) for full detail

Property features

New Development - Chelsea Creek | Gym / Swimming Pool / Spa Facilities | Imperial Wharf Overground Station (Zone 2) | 937 Square Feet (Approx.) | 2 Bedroom 2 Bathroom | EPC-C | High Quality furniture | 2nd Floor/24 Hour Concierge | Imperial Wharf rail station is 0.1 miles away

For more information about this property,
please call our Fulham branch on

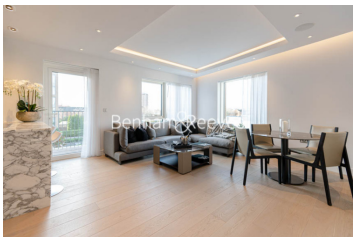
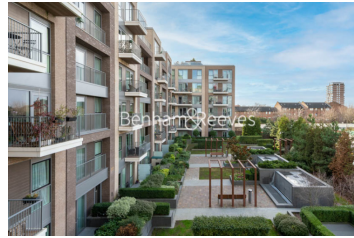
020 7348 7620

Redress & Client Money Protection :

Benham and Reeves are members of The Property Ombudsman redress scheme and have Client Money protection with ARLA Propertymark. You can find more information on our website at <https://www.benhams.com/membership/>



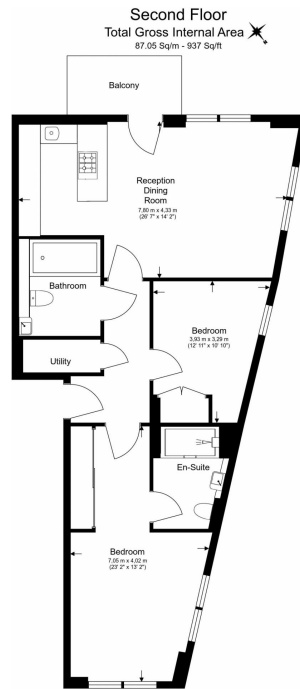
Benham & Reeves



Thurstan Street, Imperial Wharf, SW6

£1,050 per week, £4,550 per month + fees

www.benhams.com



Floor Plan measurements are approximate and are for illustrative purposes only. While we do not doubt the floor plans accuracy we make no guarantee, warranty or representation as to the accuracy and completeness of the floor plan.

Score	Energy rating	Current	Potential
92+	A		
81-91	B		
69-80	C	80 C	80 C
55-68	D		
39-54	E		
21-38	F		
1-20	G		

London branches open six days a week Mon - Sat

Canary Wharf | City | Colindale | Dartmouth Park | Ealing | Fulham
Hammersmith | Hampstead | Highgate | Hyde Park | Kensington | Kew
Knightsbridge | Nine Elms | Shoreditch | Southall | Surrey Quays
Wapping | Wembley | White City | Woolwich



International offices

China | Hong Kong SAR | India | Indonesia | Qatar | Malaysia | Middle East | Pakistan
Singapore | South Africa | Thailand | Turkey