



Benham & Reeves

**Battersea Bridge Road, Imperial Wharf, SW11**

£912 per week, £3,952 per month + fees

 3 Bedrooms    2 Bathrooms    Unfurnished

A tastefully presented apartment on Battersea, benefitting from spacious rooms, a large dining room, two balconies and an allocated parking bay.

Please [click here](#) for full detail

## Property features

**3 bedroom | 2 bathroom | Allocated parking space | Unfurnished | Large living room | EPC-C | A fully equipped kitchen with a large island | 2 balconies | Spacious rooms | Battersea Park and Clapham Junction**

For more information about this property,  
please call our Fulham branch on

**020 7348 7620**

Redress & Client Money Protection :

Benham and Reeves are members of The Property Ombudsman redress scheme and have Client Money protection with ARLA Propertymark. You can find more information on our website at <https://www.benhams.com/membership/>



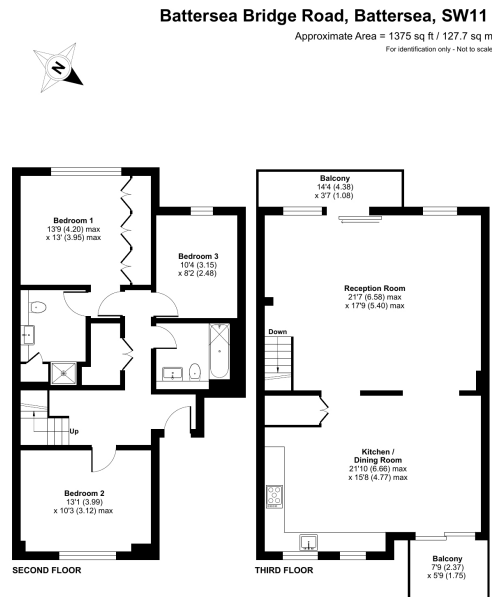
Benham & Reeves



# Battersea Bridge Road, Imperial Wharf, SW11

£912 per week, £3,952 per month + fees

www.benhams.com



Floor plan produced in accordance with RICS Property Measurement Standards incorporating International Property Measurement Standards (IPMS) (Residential). © Benham & Reeves 2024. Produced for Benham & Reeves. REF: 1118054

Score	Energy rating	Current	Potential
92+	A		
81-91	B		
69-80	C	76 C	80 C
55-68	D		
39-54	E		
21-38	F		
1-20	G		

## London branches open six days a week Mon - Sat

Canary Wharf | City | Colindale | Dartmouth Park | Ealing | Fulham  
 Hammersmith | Hampstead | Highgate | Hyde Park | Kensington | Kew  
 Knightsbridge | Nine Elms | Shoreditch | Southall | Surrey Quays  
 Wapping | Wembley | White City | Woolwich

## International offices

China | Hong Kong SAR | India | Indonesia | Qatar | Malaysia | Middle East | Pakistan  
 Singapore | South Africa | Thailand | Turkey

