



Benham & Reeves

**Battersea Reach, Imperial Wharf, SW11**

£485 per week, £2,100 per month + fees

 1 Bedroom    1 Bathroom    Furnished

A luxury apartment set on the 5th floor of Thames Point, a landmark Riverside development in Battersea

Please [click here](#) for full detail

## Property features

**1 Bedroom | 1 Bathroom | Wooden Flooring | Intergrated Appliances | Furnished | EPC-B | Huge Storage Space | 24 Hour Concierge | River View | Nearby Victoria Station**

For more information about this property, please call our Fulham branch on

**020 7348 7620**

Redress & Client Money Protection :

Benham and Reeves are members of The Property Ombudsman redress scheme and have Client Money protection with ARLA Propertymark. You can find more information on our website at <https://www.benhams.com/membership/>



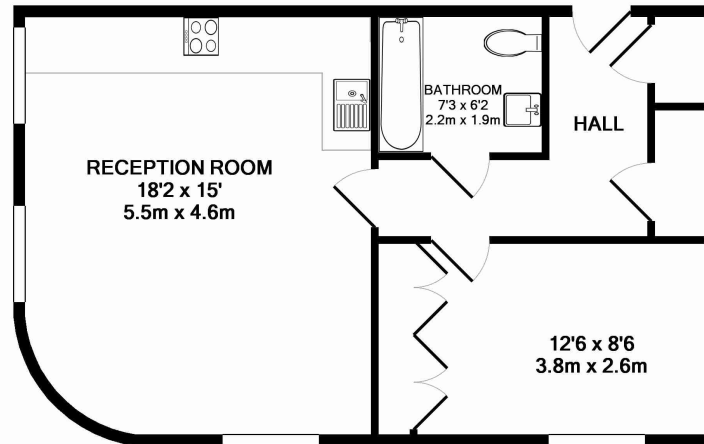
Benham & Reeves



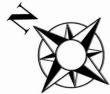
# Battersea Reach, Imperial Wharf, SW11

£485 per week, £2,100 per month + fees

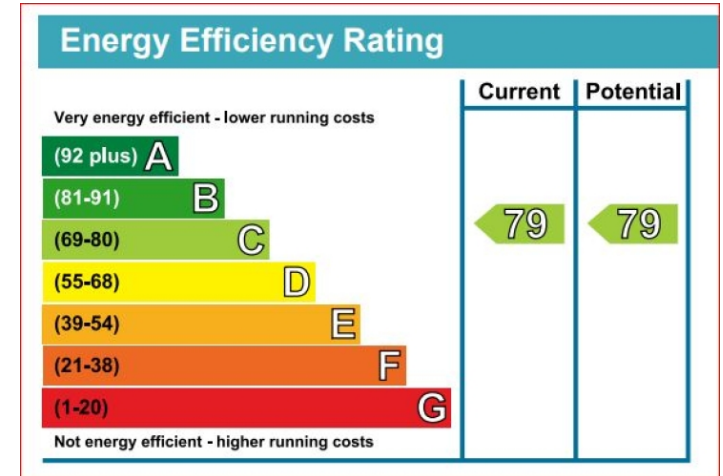
www.benhams.com



505 SE AP, SW11 - 5TH FLOOR  
TOTAL APPROX. FLOOR AREA 523 SQ.FT. (48.6 SQ.M.)



Whilst every attempt has been made to ensure the accuracy of the floor plan contained here, measurements of doors, windows, rooms and any other items are approximate and no responsibility is taken for any error, omission, or mis-statement. This plan is for illustrative purposes only and should be used as such by any prospective purchaser. The services, systems and appliances shown have not been tested and no guarantee as to their operability or efficiency can be given  
Made with Metropix ©2015



## London branches open six days a week Mon - Sat

Canary Wharf | City | Colindale | Dartmouth Park | Ealing | Fulham  
Hammersmith | Hampstead | Highgate | Hyde Park | Kensington | Kew  
Knightsbridge | Nine Elms | Shoreditch | Southall | Surrey Quays  
Wapping | Wembley | White City | Woolwich

## International offices

China | Hong Kong SAR | India | Indonesia | Qatar | Malaysia | Middle East | Pakistan  
Singapore | South Africa | Thailand | Turkey

