



Benham & Reeves

Chelsea Wharf, Imperial Wharf, SW10

£1,680 per week, £7,280 per month + fees

🛏️ 2 Bedrooms 🚿 2 Bathrooms 🚗 Unfurnished

A Stylish 2nd floor apartment situated in a popular desirable development along the River Thames. The property is ideally located near the amenities of Chelsea, and within walking distance to Imperial Wharf Overground station. EPC-C

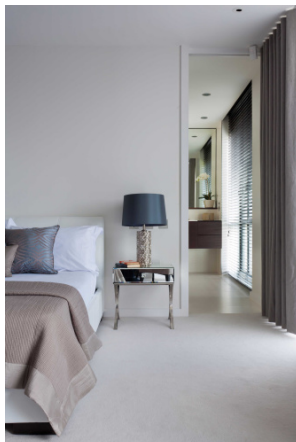
Please [click here](#) for full detail

Property features

2 Bedrooms (1625 sq ft) | Direct River views | Unfurnished | 24 hour porter | High quality fitted kitchen | EPC-C | 1 right to park | 1st floor (with lift access) | Parking available at separate negotiation | Walking distance to Imperial wharf station

For more information about this property, please call our Fulham branch on

020 7348 7620



Redress & Client Money Protection :

Benham and Reeves are members of The Property Ombudsman redress scheme and have Client Money protection with ARLA Propertymark. You can find more information on our website at <https://www.benhams.com/membership/>

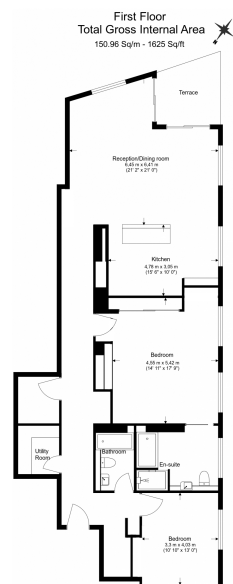
Benham&Reeves



Chelsea Wharf, Imperial Wharf, SW10

£1,680 per week, £7,280 per month + fees

www.benhams.com



Benham & Reeves

Floor Plan measurements are approximate and are for illustrative purposes only. While we do not doubt the floor plans accuracy, we make no guarantee, warranty or representation as to the accuracy and completeness of the floor plan.

Score	Energy rating	Current	Potential
92+	A		
81-91	B		81 B
69-80	C	79 C	
55-68	D		
39-54	E		
21-38	F		
1-20	G		

London branches open six days a week Mon - Sat

Canary Wharf | City | Colindale | Dartmouth Park | Ealing | Fulham
Hammersmith | Hampstead | Highgate | Hyde Park | Kensington | Kew
Knightsbridge | Nine Elms | Shoreditch | Southall | Surrey Quays
Wapping | Wembley | White City | Woolwich

International offices

China | Hong Kong SAR | India | Indonesia | Qatar | Malaysia | Middle East | Pakistan
Singapore | South Africa | Thailand | Turkey



Benham & Reeves