



Benham & Reeves

Young Street, Imperial House, W8

£3,650 per week, £15,817 per month + fees

 3 Bedrooms  3 Bathrooms 
Furnished/UnFurnished

An outstanding, spacious 5th and 6th floor air-conditioned penthouse set within a perfectly positioned modern building in a great location just south of Kensington High Street. Minutes from High Street Kensington Underground station (District and Circle Lines), the open spaces of Kensington Gardens and Hyde Park.

Please [click here](#) for full detail

Property features

3 Bedrooms | 3 Bathrooms | Reception | Furn/Unfurn | Fitted Kitchen | EPC-C | Wood Floors, Terrace | Under Floor Heating | Nearby High Street Kensington Tube Station

For more information about this property, please call our Kensington branch on

020 7938 3522

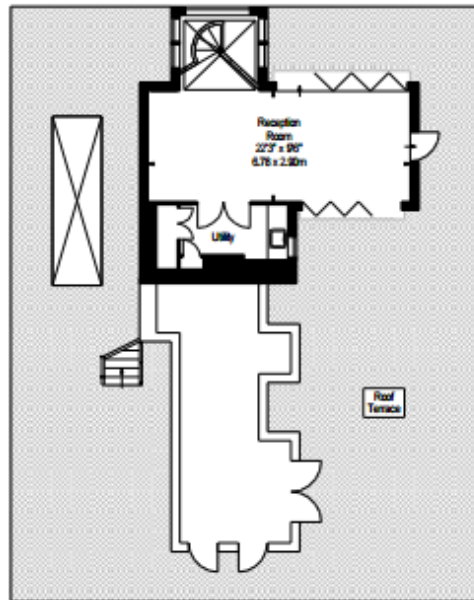
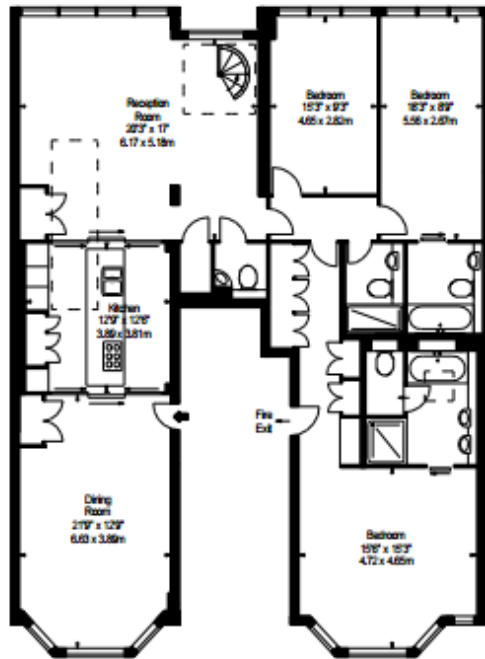




Young Street, Imperial House, W8

£3,650 per week, £15,817 per month + fees

www.benhams.com



Energy Efficiency Rating		Current	Potential
<i>Very energy efficient - lower running costs</i>			
(92 plus)	A		
(81 - 91)	B		
(69 - 80)	C	73	76
(55 - 68)	D		
(39 - 54)	E		
(21 - 38)	F		
(1 - 20)	G		
<i>Not energy efficient - higher running costs</i>			
England & Wales		EU Directive 2002/91/EC	

London branches open six days a week Mon - Sat

Canary Wharf | City | Colindale | Dartmouth Park | Ealing | Fulham
 Hammersmith | Hampstead | Highgate | Hyde Park | Kensington | Kew
 Knightsbridge | Nine Elms | Shoreditch | Southall | Surrey Quays
 Wapping | Wembley | White City | Woolwich

International offices

China | Hong Kong SAR | India | Indonesia | Qatar | Malaysia | Middle East | Pakistan
 Singapore | South Africa | Thailand | Turkey

