



Benham & Reeves

**Westland Place, Hoxton, N1**

£550 per week, £2,383 per month + fees

 1 Bedroom    1 Bathroom    Furnished

Stylish apartment set within a highly sought-after apartment block in Hoxton located 5 minutes from Old Street station and within easy reach of The City, Shoreditch and Clerkenwell.

Please [click here](#) for full detail

## Property features

**Modern 1 Bedroom Apartment | Bright Open Plan Reception With Dual Balconies | Fitted Kitchen with Integrated Appliances | Well Equipped Double Bedroom | Modern Family Size Bathroom | EPC-C | Wood Floors & Full-Length Windows Throughout | Professionally Managed Property | Close to The City, Shoreditch & Angel | 5 Minutes from Old Street Station**

For more information about this property,  
please call our Wapping branch on

**020 7680 8900**



Redress & Client Money Protection :  
Benham and Reeves are members of The Property Ombudsman redress scheme and have Client Money protection with ARLA Propertymark.  
You can find more information on our website at <https://www.benhams.com/membership/>

Benham & Reeves

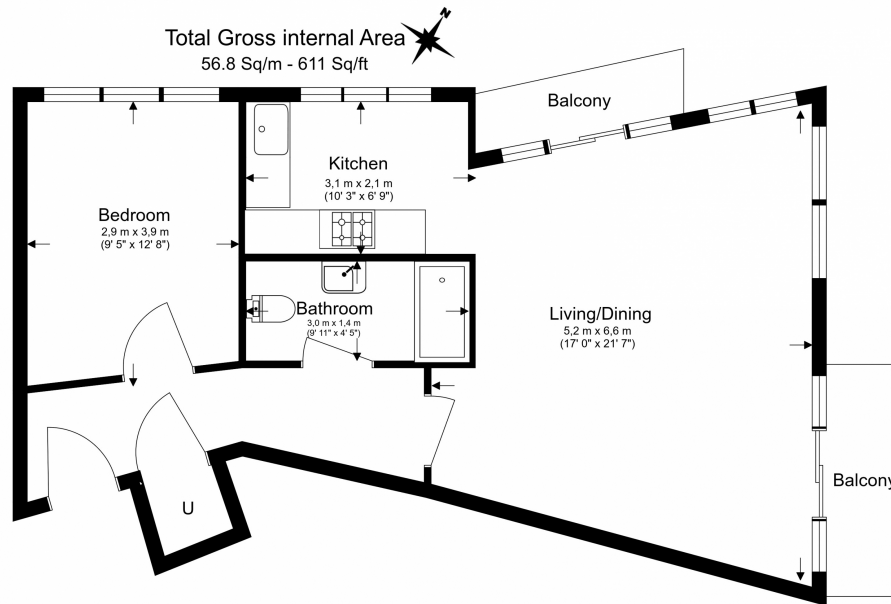




# Westland Place, Hoxton, N1

£550 per week, £2,383 per month + fees

www.benhams.com



Floor Plan measurements are approximate and are for illustrative purposes only. While we do not doubt the floor plans accuracy, we make no guarantee, warranty or representation as to the accuracy and completeness of the floor plan.

Score	Energy rating	Current	Potential
92+	A		
81-91	B		
69-80	C	79   c	80   c
55-68	D		
39-54	E		
21-38	F		
1-20	G		

## London branches open six days a week Mon - Sat

Canary Wharf | City | Colindale | Dartmouth Park | Ealing | Fulham  
Hammersmith | Hampstead | Highgate | Hyde Park | Kensington | Kew  
Knightsbridge | Nine Elms | Shoreditch | Southall | Surrey Quays  
Wapping | Wembley | White City | Woolwich



## International offices

China | Hong Kong SAR | India | Indonesia | Qatar | Malaysia | Middle East | Pakistan  
Singapore | South Africa | Thailand | Turkey