



Benham & Reeves

**Habito, Hounslow, TW3**

£461 per week, £1,998 per month + fees

 2 Bedrooms    2 Bathrooms    Unfurnished

A spacious apartment situated in a contemporary development in the heart of Hounslow, TW3, a few minutes from Hounslow Central Underground (Piccadilly Line) which offers access to both the West End and Heathrow.

Please [click here](#) for full detail

## Property features

**Unfurnished | Modern Aspect | Wood Floors | Central Heating | Private Balcony | EPC-B | Communal Gardens | Local Amenities | Lift Access | Hounslow central**

For more information about this property, please call our Kew branch on

**020 8326 1960**



Redress & Client Money Protection :

Benham and Reeves are members of The Property Ombudsman redress scheme and have Client Money protection with ARLA Propertymark. You can find more information on our website at <https://www.benhams.com/membership/>

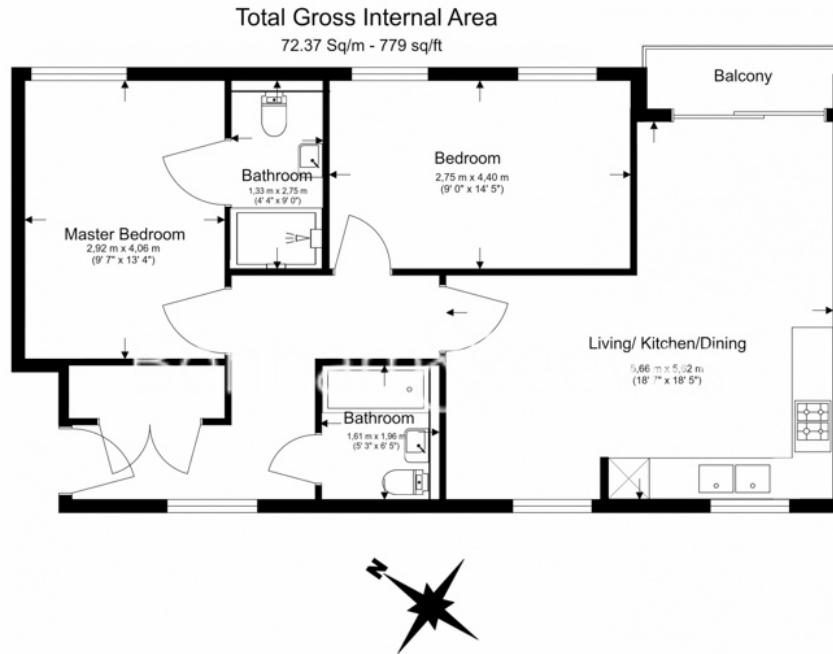
**Benham & Reeves**



# Habito, Hounslow, TW3

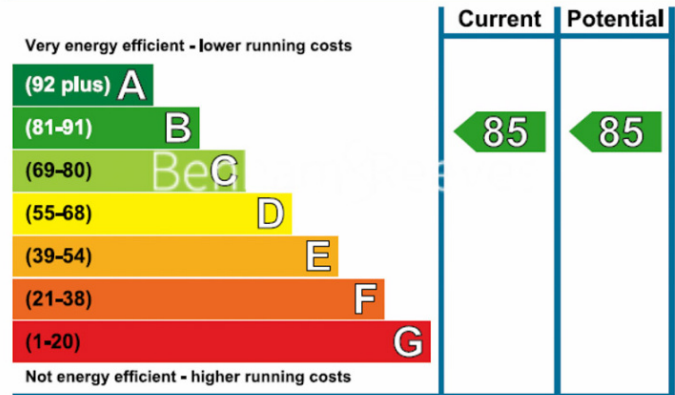
£461 per week, £1,998 per month + fees

www.benhams.com



Floor Plan measurements are approximate and are for illustrative purposes only. While we do not doubt the floor plans accuracy, we make no guarantee, warranty or representation as to the accuracy and completeness of the floor plan.

## Energy Efficiency Rating



## London branches open six days a week Mon - Sat

Canary Wharf | City | Colindale | Dartmouth Park | Ealing | Fulham  
Hammersmith | Hampstead | Highgate | Hyde Park | Kensington | Kew  
Knightsbridge | Nine Elms | Shoreditch | Southall | Surrey Quays  
Wapping | Wembley | White City | Woolwich

## International offices

China | Hong Kong SAR | India | Indonesia | Qatar | Malaysia | Middle East | Pakistan  
Singapore | South Africa | Thailand | Turkey

