



Benham & Reeves

**Habito, Hounslow, TW3**

£462 per week, £2,000 per month + fees

 2 Bedrooms    2 Bathrooms    Unfurnished

SPACIOUS two double bedroom apartment situated in the boutique HABITO development in the heart of Hounslow, TW3. Just a few minutes from HOUNSLOW CENTRAL underground (Piccadilly Line) which offers access to both the West End and Heathrow.

Please [click here](#) for full detail

## Property features

**Central location | Modern aspect | Wood floors | Central heating | Private balcony | EPC-B | Communal gardens | Local amenities | Lift access | Hounslow central**

For more information about this property, please call our Kew branch on

**020 8326 1960**

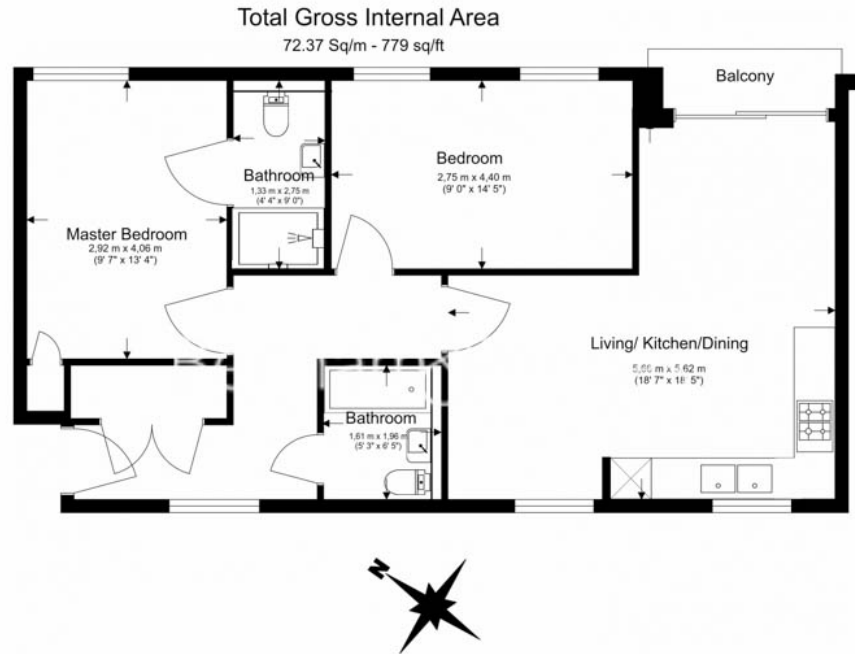




# Habito, Hounslow, TW3

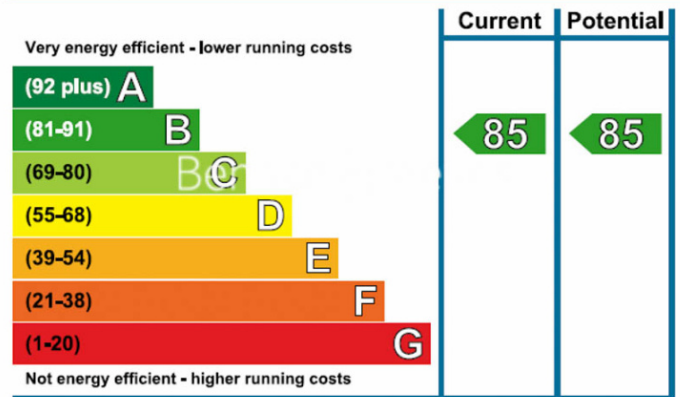
£462 per week, £2,000 per month + fees

www.benhams.com



Floor Plan measurements are approximate and are for illustrative purposes only. While we do not doubt the floor plans accuracy, we make no guarantee, warranty or representation as to the accuracy and completeness of the floor plan.

## Energy Efficiency Rating



## London branches open six days a week Mon - Sat

Canary Wharf | City | Colindale | Dartmouth Park | Ealing | Fulham  
Hammersmith | Hampstead | Highgate | Hyde Park | Kensington | Kew  
Knightsbridge | Nine Elms | Shoreditch | Southall | Surrey Quays  
Wapping | Wembley | White City | Woolwich

## International offices

China | Hong Kong SAR | India | Indonesia | Qatar | Malaysia | Middle East | Pakistan  
Singapore | South Africa | Thailand | Turkey

