



Benham & Reeves

## High Street Quarter, Hounslow, TW3

£381 per week, £1,651 per month + fees

 1 Bedroom    1 Bathroom    Furnished

Stylish apartment situated in a modern development just a few minutes from Hounslow High Street and Hounslow West underground station (Piccadilly Line) which offers access to both the West End and Heathrow.

Please [click here](#) for full detail

## Property features

**High Street Quarter | Modern Aspect | Wood Floors | Underfloor Heating | Private Balcony | EPC-B | Communal Gardens | Bicycle Storage | Lift Access | Hounslow High Street**

For more information about this property, please call our Kew branch on

**020 8326 1960**

Redress & Client Money Protection :

Benham and Reeves are members of The Property Ombudsman redress scheme and have Client Money protection with ARLA Propertymark. You can find more information on our website at <https://www.benhams.com/membership/>



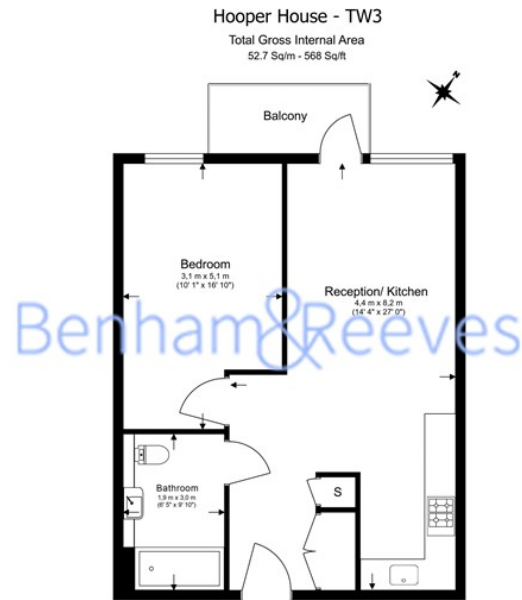
Benham & Reeves



# High Street Quarter, Hounslow, TW3

£381 per week, £1,651 per month + fees

www.benhams.com



Floor Plan measurements are approximate and are for illustrative purposes only. While we do not doubt the floor plans accuracy we make no guarantee, warranty or representation as to the accuracy and completeness of the floor plan.

Score	Energy rating	Current	Potential
92+	A		
81-91	B	84   B	84   B
69-80	C		
55-68	D		
39-54	E		
21-38	F		
1-20	G		

## London branches open six days a week Mon - Sat

Canary Wharf | City | Colindale | Dartmouth Park | Ealing | Fulham  
Hammersmith | Hampstead | Highgate | Hyde Park | Kensington | Kew  
Knightsbridge | Nine Elms | Shoreditch | Southall | Surrey Quays  
Wapping | Wembley | White City | Woolwich

## International offices

China | Hong Kong SAR | India | Indonesia | Qatar | Malaysia | Middle East | Pakistan  
Singapore | South Africa | Thailand | Turkey

