



Benham & Reeves

**Habito, Hounslow, TW3**

£358 per week, £1,551 per month + fees

 1 Bedroom    1 Bathroom    Unfurnished

Modern bright 3rd floor apartment situated in a boutique development in the heart of Hounslow, TW3. Located a few minutes from Hounslow Central Underground Station (Piccadilly Line) which offers access to both the West End and Heathrow.

Please [click here](#) for full detail

## Property features

**Modern Flat | Modern Aspect | Wood Floors | Central Heating | Private Balcony | EPC-B | Communal Gardens | Local Amenities | Lift Access | Hounslow Central**

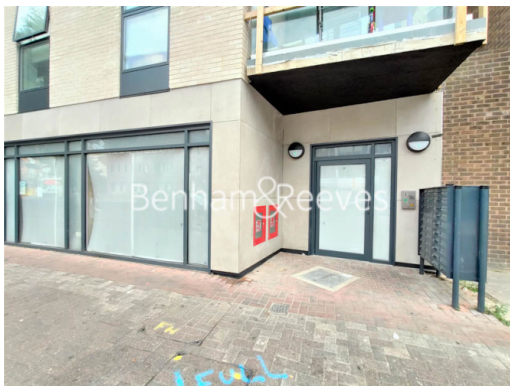
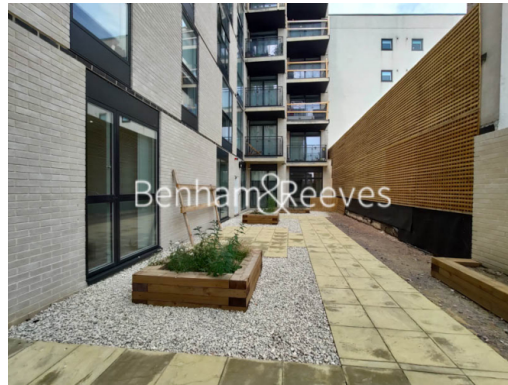
For more information about this property, please call our Kew branch on

**020 8326 1960**



Redress & Client Money Protection :  
Benham and Reeves are members of The Property Ombudsman redress scheme and have Client Money protection with ARLA Propertymark.  
You can find more information on our website at <https://www.benhams.com/membership/>

**Benham & Reeves**

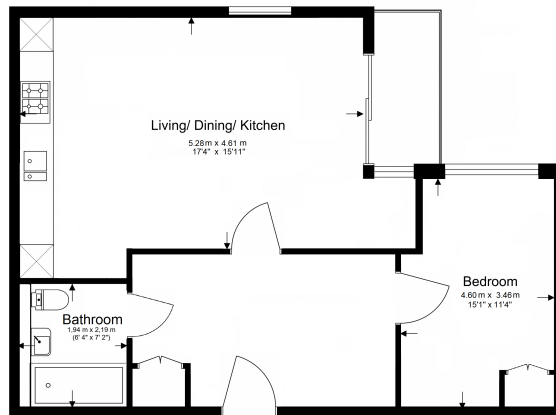


# Habito, Hounslow, TW3

£358 per week, £1,551 per month + fees

www.benhams.com

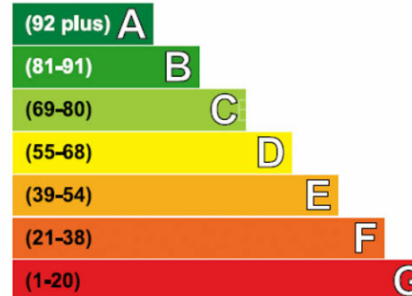
Total Gross Internal Area  
56 Sq/m - 604 Sq/ft



Floor Plan measurements are approximate and are for illustrative purposes only. While we do not doubt the floor plans accuracy.

## Energy Efficiency Rating

Very energy efficient - lower running costs



Current	Potential
85	85

## London branches open six days a week Mon - Sat

Canary Wharf | City | Colindale | Dartmouth Park | Ealing | Fulham  
Hammersmith | Hampstead | Highgate | Hyde Park | Kensington | Kew  
Knightsbridge | Nine Elms | Shoreditch | Southall | Surrey Quays  
Wapping | Wembley | White City | Woolwich

## International offices

China | Hong Kong SAR | India | Indonesia | Qatar | Malaysia | Middle East | Pakistan  
Singapore | South Africa | Thailand | Turkey

