



Benham&Reeves

**West Stand Apartments, Highbury Stadium Square,  
N5**

£440 per week, £1,907 per month + fees

 1 Bedroom    1 Bathroom    Furnished

BRAND NEW, IMPRESSIVE studio apartment, situated within the latest phase of Royal Arsenal RIVERSIDE, Waterfront 3. The development benefits from 24-hour CONCIERGE, a residents only GYM, SWIMMING POOL, STEAM ROOM, SAUNA AND CINEMA ROOM.

Please [click here](#) for full detail

## Property features

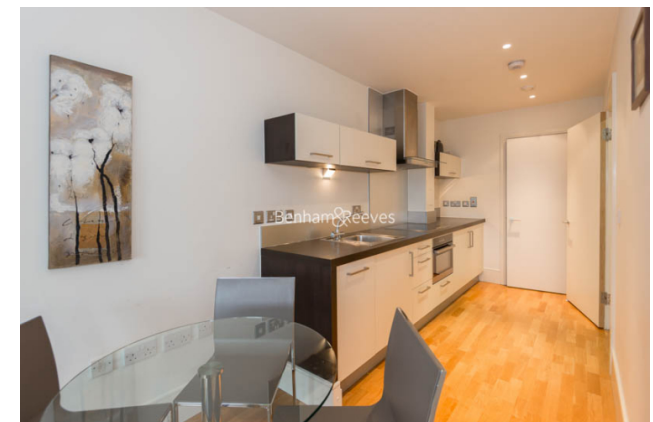
**1 Double Bedroom | 1 Bathroom | Open Plan Reception | Furnished | Fitted Kitchen | EPC-C | 24 Hours Concierge, Secured and Gated | Communal Garden, Lift, Phone Entry | Nearby Arsenal and Drayton Park Stations**

For more information about this property, please call our Highgate branch on

**020 8341 2335**

Redress & Client Money Protection :

Benham and Reeves are members of The Property Ombudsman redress scheme and have Client Money protection with ARLA Propertymark. You can find more information on our website at <https://www.benhams.com/membership/>



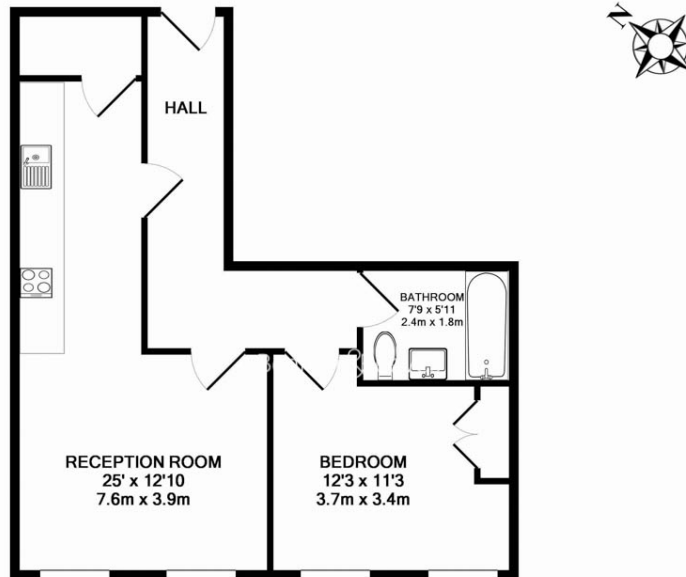
Benham & Reeves



# West Stand Apartments, Highbury Stadium Square, N5

www.benhams.com

£440 per week, £1,907 per month + fees



80WS.N5 - 4TH FLOOR  
 TOTAL APPROX. FLOOR AREA 529 SQ.FT. (49.1 SQ.M.)  
 Whilst every attempt has been made to ensure the accuracy of the floor plan contained here, measurements of doors, windows, rooms and any other items are approximate and no responsibility is taken for any error, omission, or mis-statement. This plan is for illustrative purposes only and should be used as such by any prospective purchaser. The services, systems and appliances shown have not been tested and no guarantee as to their operability or efficiency can be given  
 Made with Metropix ©2017

Energy Efficiency Rating		
	Current	Potential
Very energy efficient - lower running costs		
(92 plus) <b>A</b>		
(81-91) <b>B</b>		
(69-80) <b>C</b>	71	72
(55-68) <b>D</b>		
(39-54) <b>E</b>		
(21-38) <b>F</b>		
(1-20) <b>G</b>		
Not energy efficient - higher running costs		
<b>England &amp; Wales</b>	EU Directive 2002/91/EC	

## London branches open six days a week Mon - Sat

Canary Wharf | City | Colindale | Dartmouth Park | Ealing | Fulham  
 Hammersmith | Hampstead | Highgate | Hyde Park | Kensington | Kew  
 Knightsbridge | Nine Elms | Shoreditch | Southall | Surrey Quays  
 Wapping | Wembley | White City | Woolwich

## International offices

China | Hong Kong SAR | India | Indonesia | Qatar | Malaysia | Middle East | Pakistan  
 Singapore | South Africa | Thailand | Turkey

