



Benham & Reeves

Highbury Stadium Square, Highbury, N5

£612 per week, £2,652 per month + fees

🛏️ 2 Bedrooms 🚿 2 Bathrooms 🛋️ Furnished

Fantastic duplex apartment situated within the iconic East Stand part of the re-development of the former Arsenal Stadium. The development boasts Concierge and lovely communal gardens and is only a short distance from Arsenal Tube.

Please [click here](#) for full detail

Property features

Master Bedroom and Mezzanine Floor Bedroom | 1 reception with wood floor | 1 fully fitted modern kitchen | Two Bathrooms plus Separate WC | 24/7 Hours Concierge, Onsite Gym and Swimming Pool | EPC-B | Communal Garden | Lift, video entry, gated development | Beautiful garden (former Highbury football pitch) view | Nearby Arsenal and Drayton Park Station

For more information about this property,
please call our Highgate branch on

020 8341 2335

Redress & Client Money Protection :

Benham and Reeves are members of The Property Ombudsman redress scheme and have Client Money protection with ARLA Propertymark. You can find more information on our website at <https://www.benhams.com/membership/>



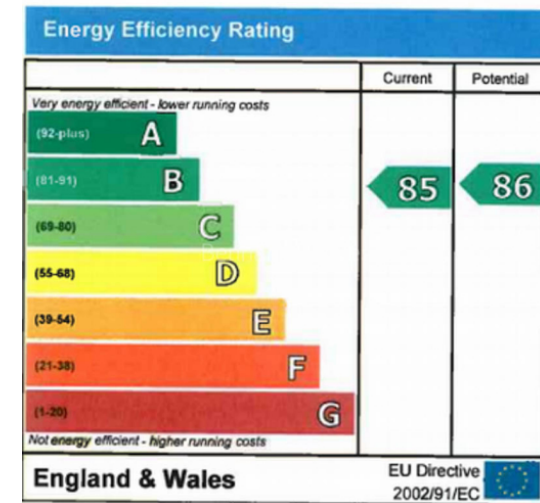
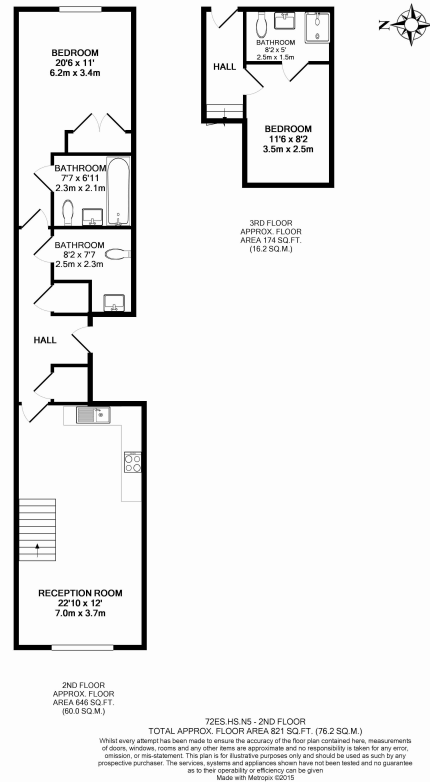
Benham & Reeves



Highbury Stadium Square, Highbury, N5

£612 per week, £2,652 per month + fees

www.benhams.com



London branches open six days a week Mon - Sat

Canary Wharf | City | Colindale | Dartmouth Park | Ealing | Fulham
Hammersmith | Hampstead | Highgate | Hyde Park | Kensington | Kew
Knightsbridge | Nine Elms | Shoreditch | Southall | Surrey Quays
Wapping | Wembley | White City | Woolwich

International offices

China | Hong Kong SAR | India | Indonesia | Qatar | Malaysia | Middle East | Pakistan
Singapore | South Africa | Thailand | Turkey

