



Benham & Reeves

Laycock Street, Highbury & Islington, N1

£969 per week, £4,199 per month + fees

 2 Bedrooms  2 Bathrooms  Furnished

Furnished, spacious apartment set over two floors' moments away from Highbury & Islington Station.

Please [click here](#) for full detail

Property features

Spacious Two Double Bedroom Apartment | 2 Family sized Bathrooms | Open Plan Reception | Fully Fitted Kitchen | Furnished | EPC-B | Daily porter | Private Balcony | Excellent Transport links Nearby | Highbury & Islington Station Moments Away

For more information about this property, please call our City branch on

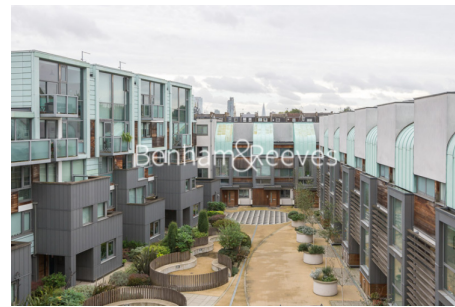
020 7213 9700

Redress & Client Money Protection :

Benham and Reeves are members of The Property Ombudsman redress scheme and have Client Money protection with ARLA Propertymark. You can find more information on our website at <https://www.benhams.com/membership/>



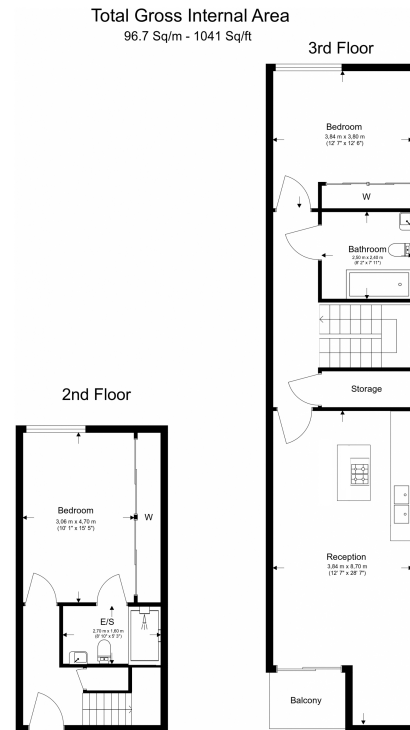
Benham & Reeves



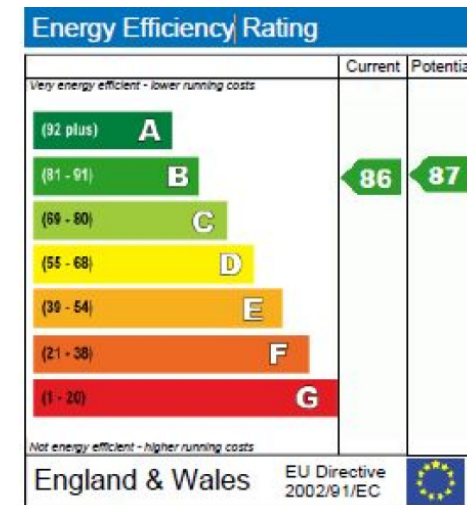
Laycock Street, Highbury & Islington, N1

£969 per week, £4,199 per month + fees

www.benhams.com



Floor Plan measurements are approximate and are for illustrative purposes only. While we do not doubt the floor plans accuracy, we make no guarantee, warranty or representation as to the accuracy and completeness of the floor plan.



London branches open six days a week Mon - Sat

Canary Wharf | City | Colindale | Dartmouth Park | Ealing | Fulham
Hammersmith | Hampstead | Highgate | Hyde Park | Kensington | Kew
Knightsbridge | Nine Elms | Shoreditch | Southall | Surrey Quays
Wapping | Wembley | White City | Woolwich

International offices

China | Hong Kong SAR | India | Indonesia | Qatar | Malaysia | Middle East | Pakistan
Singapore | South Africa | Thailand | Turkey



Benham & Reeves