



Benham & Reeves

Farine Avenue, Hayes, UB3

£416 per week, £1,803 per month + fees

 1 Bedroom  1 Bathroom  Unfurnished

Modern 9th floor apartment, with parking, is situated in an exciting development in Hays a short walk from Hayes and Harlington Station, a strategic stop on the super-fast Elizabeth Line.

Please [click here](#) for full detail

Property features

One Bedroom | Parking | Residents gym | Unfurnished | Wood floors | EPC-B | Balcony | Large windows | Fully Fitted Kitchen | Nearby Hayes and Harlington Station

For more information about this property, please call our Southall branch on

020 8051 0800

Redress & Client Money Protection :

Benham and Reeves are members of The Property Ombudsman redress scheme and have Client Money protection with ARLA Propertymark. You can find more information on our website at <https://www.benhams.com/membership/>



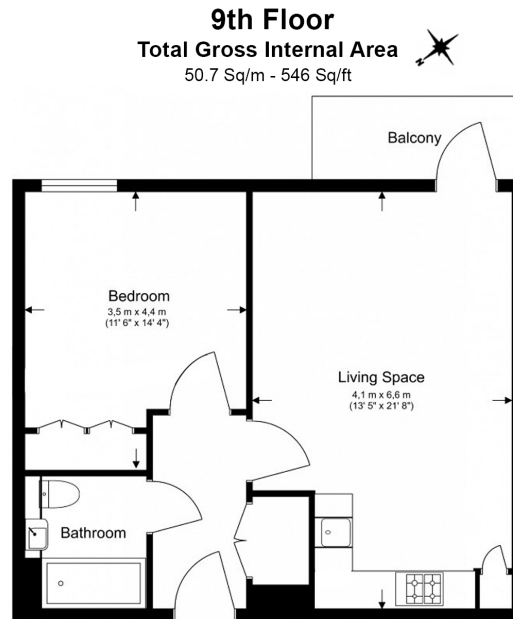
Benham & Reeves



Farine Avenue, Hayes, UB3

£416 per week, £1,803 per month + fees

www.benhams.com



Score	Energy rating	Current	Potential
92+	A		
81-91	B	85 B	85 B
69-80	C		
55-68	D		
39-54	E		
21-38	F		
1-20	G		

London branches open six days a week Mon - Sat

Canary Wharf | City | Colindale | Dartmouth Park | Ealing | Fulham
Hammersmith | Hampstead | Highgate | Hyde Park | Kensington | Kew
Knightsbridge | Nine Elms | Shoreditch | Southall | Surrey Quays
Wapping | Wembley | White City | Woolwich

International offices

China | Hong Kong SAR | India | Indonesia | Qatar | Malaysia | Middle East | Pakistan
Singapore | South Africa | Thailand | Turkey

