



Benham & Reeves

## **Hargrave Drive, Harrow, HA1**

£485 per week, £2,102 per month + fees

 2 Bedrooms    2 Bathrooms    Furnished

An immaculate second floor apartment set within landscaped gardens in a popular development in Harrow. The property is a short walk to Harrow & Wealdstone underground and Overground station.

Please [click here](#) for full detail

## Property features

**Two double bedrooms | Balcony | Fitted modern kitchen | Two bathrooms | Furnished | EPC-B | Residents gym | Local amenities and transport links | Wood floors | Harrow & Wealdstone underground and Overground station**

For more information about this property,  
please call our Wembley branch on

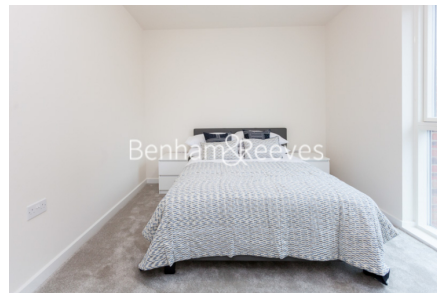
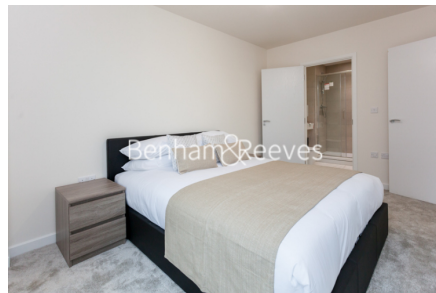
**020 8187 3100**



Redress & Client Money Protection :  
Benham and Reeves are members of The Property Ombudsman redress scheme and have Client Money protection with ARLA Propertymark.  
You can find more information on our website at <https://www.benhamandreeves.com/membership/>

Benham & Reeves

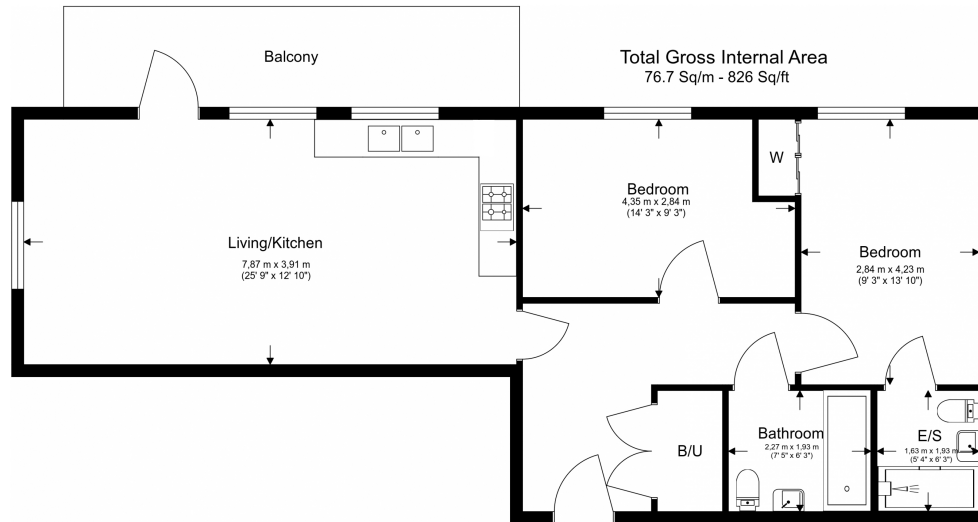




# Hargrave Drive, Harrow, HA1

£485 per week, £2,102 per month + fees

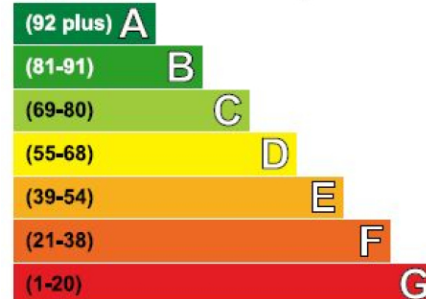
[www.benhams.com](http://www.benhams.com)



Floor Plan measurements are approximate and are for illustrative purposes only. While we do not doubt the floor plans accuracy, we make no guarantee, warranty or representation as to the accuracy and completeness of the floor plan.

## Energy Efficiency Rating

Very energy efficient - lower running costs



Current	Potential
86	86

Not energy efficient - higher running costs

## London branches open six days a week Mon - Sat

Canary Wharf | City | Colindale | Dartmouth Park | Ealing | Fulham  
Hammersmith | Hampstead | Highgate | Hyde Park | Kensington | Kew  
Knightsbridge | Nine Elms | Shoreditch | Southall | Surrey Quays  
Wapping | Wembley | White City | Woolwich

## International offices

China | Hong Kong SAR | India | Indonesia | Qatar | Malaysia | Middle East | Pakistan  
Singapore | South Africa | Thailand | Turkey



Benham & Reeves