



Benham & Reeves

Meadowview Close, Harrow, HA1

£370 per week, £1,603 per month + fees

🛏 1 Bedroom 🚿 1 Bathroom 🛋 Furnished

A spacious light 2nd floor apartment situated in an popular development set amongst landscaped green open spaces in Harrow. Excellently located within walking distance from Harrow & Wealdstone or Harrow-on-the-Hill stations.

Please [click here](#) for full detail

Property features

One Bedroom Apartment | Balcony | Wood floors | Furnished | Underfloor Heating | EPC-B | Modern kitchen | Walking distance to all local amenities and transport links | Wealdstone or Harrow-on-the-Hill stations

For more information about this property,
please call our Wembley branch on

020 8187 3100



Redress & Client Money Protection :
Benham and Reeves are members of The Property Ombudsman redress scheme and have Client Money protection with ARLA Propertymark.
You can find more information on our website at <https://www.benhams.com/membership/>

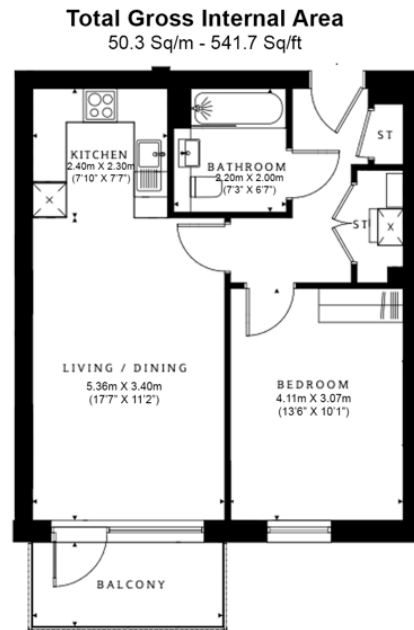
Benham & Reeves



Meadowview Close, Harrow, HA1

£370 per week, £1,603 per month + fees

www.benhams.com



Floor Plan measurements are approximate and are for illustrative purposes only. While we do not doubt the floor plans accuracy, we make no guarantee, warranty or representation as to the accuracy and completeness of the floor plan.

Score	Energy rating	Current	Potential
92+	A		
81-91	B	85 B	85 B
69-80	C		
55-68	D		
39-54	E		
21-38	F		
1-20	G		

London branches open six days a week Mon - Sat

Canary Wharf | City | Colindale | Dartmouth Park | Ealing | Fulham
Hammersmith | Hampstead | Highgate | Hyde Park | Kensington | Kew
Knightsbridge | Nine Elms | Shoreditch | Southall | Surrey Quays
Wapping | Wembley | White City | Woolwich

International offices

China | Hong Kong SAR | India | Indonesia | Qatar | Malaysia | Middle East | Pakistan
Singapore | South Africa | Thailand | Turkey

