



Benham & Reeves

**Lighterman Towers, Harbour Avenue, SW10**

£650 per week, £2,817 per month + fees

🛏 1 Bedroom    🚿 1 Bathroom    🚗 Furnished

Stylish first floor apartment, with lift access, situated a 2-minute walk from Imperial Wharf Station just under 700 Sqft

Please [click here](#) for full detail

## Property features

**Large Bedroom Apartment with Built-in Wardrobe | Fully Fitted Kitchen Integrated with Well-Known Gaggenau App | High Quality Furnished / LED Spotlights / Sizable Private | Air Ventilation / Underfloor Heating / Air Conditioning | On site gym included | EPC-B | Wooden floors throughout | 24 Hr Concierge / 24 Hr Security / Communal Gardens | Luxurious Bathrooms | Nearby Imperial Wharf Overground Station**

For more information about this property, please call our Fulham branch on

**020 7348 7620**



Redress & Client Money Protection :  
Benham and Reeves are members of The Property Ombudsman redress scheme and have Client Money protection with ARLA Propertymark.  
You can find more information on our website at <https://www.benhams.com/membership/>

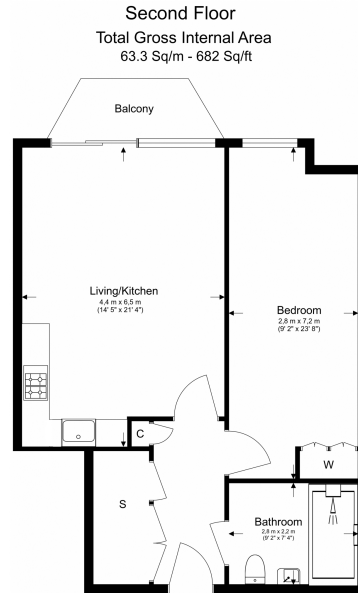
Benham & Reeves



# Lighterman Towers, Harbour Avenue, SW10

£650 per week, £2,817 per month + fees

www.benhams.com



Floor Plan measurements are approximate and are for illustrative purposes only. While we do not doubt the floor plans accuracy, we make no guarantee, warranty or representation as to the accuracy and completeness of the floor plan.

Score	Energy rating	Current	Potential
92+	A		
81-91	B	85 B	85 B
69-80	C		
55-68	D		
39-54	E		
21-38	F		
1-20	G		

## London branches open six days a week Mon - Sat

Canary Wharf | City | Colindale | Dartmouth Park | Ealing | Fulham  
Hammersmith | Hampstead | Highgate | Hyde Park | Kensington | Kew  
Knightsbridge | Nine Elms | Shoreditch | Southall | Surrey Quays  
Wapping | Wembley | White City | Woolwich

## International offices

China | Hong Kong SAR | India | Indonesia | Qatar | Malaysia | Middle East | Pakistan  
Singapore | South Africa | Thailand | Turkey

