



Benham & Reeves

## **Winchester Road, Hampstead, NW3**

£716 per week, £3,103 per month + fees

 1 Bedroom    1 Bathroom    Furnished

A contemporary spacious 3rd floor apartment situated within a striking development, minutes from Swiss Cottage Underground Station, Regents Park, the Canal, Primrose Hill, and the amenities of Finchley Road.

Please [click here](#) for full detail

## Property features

**1 Bedroom | Large balcony | Large Bathroom | Fitted Kitchen | Modern apartment | EPC-C | Private Car Park | 24 Hour Porter | Nearby Swiss Cottage Underground station**

For more information about this property,  
please call our Hampstead branch on

**020 7435 9681**



Redress & Client Money Protection :  
Benham and Reeves are members of The Property Ombudsman redress scheme and have Client Money protection with ARLA Propertymark.  
You can find more information on our website at <https://www.benhams.com/membership/>

Benham & Reeves

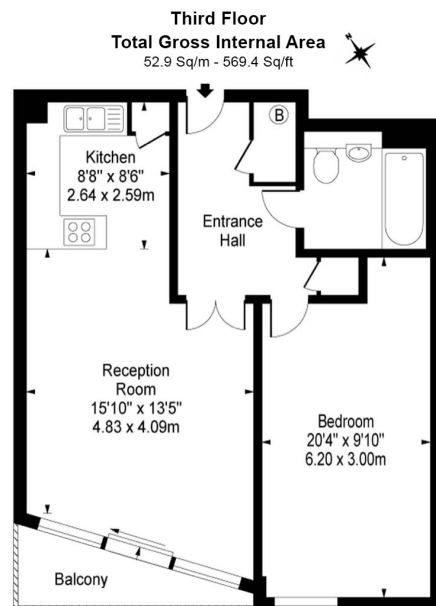




# Winchester Road, Hampstead, NW3

£716 per week, £3,103 per month + fees

www.benhams.com



Floor Plan measurements are approximate and are for illustrative purposes only. While we do not doubt the floor plans accuracy, we make no guarantee, warranty or representation as to the accuracy and completeness of the floor plan.

Score	Energy rating	Current	Potential
92+	A		
81-91	B		86   B
69-80	C	74   C	
55-68	D		
39-54	E		
21-38	F		
1-20	G		

## London branches open six days a week Mon - Sat

Canary Wharf | City | Colindale | Dartmouth Park | Ealing | Fulham  
Hammersmith | Hampstead | Highgate | Hyde Park | Kensington | Kew  
Knightsbridge | Nine Elms | Shoreditch | Southall | Surrey Quays  
Wapping | Wembley | White City | Woolwich

## International offices

China | Hong Kong SAR | India | Indonesia | Qatar | Malaysia | Middle East | Pakistan  
Singapore | South Africa | Thailand | Turkey



Benham & Reeves