



Benham & Reeves

Regency Lodge, Hampstead, NW3

£542 per week, £2,350 per month + fees

 1 Bedroom  1 Bathroom  Furnished

A spacious top-floor apartment, with separate study room, situated within a sought-after Mansion block in Swiss Cottage, moments from the Tube Station. Cottage tube station.

Please [click here](#) for full detail

Property features

Large Double Bedroom Apartment | Generous Reception Room | Seperate Kitchen | Excellent Fitted Storage | Extra study area | Heating and Hot Water Included in Rent | Secure Portered Mansion Block | Excellent Location to Local Amenities | Swiss Cottage Underground Station is Walking Distance

For more information about this property,
please call our Hampstead branch on

020 7435 9681

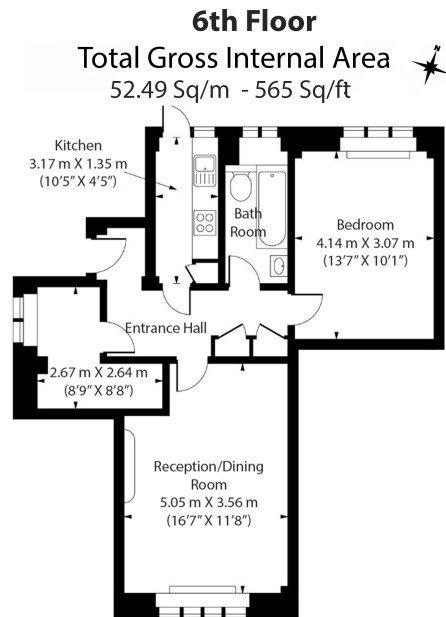




Regency Lodge, Hampstead, NW3

£542 per week, £2,350 per month + fees

www.benhams.com



Floor Plan measurements are approximate and are for illustrative purposes only. While we do not doubt the floor plans accuracy, we make no guarantee, warranty or representation as to the accuracy and completeness of the floor plan.

Score	Energy rating	Current	Potential
92+	A		
81-91	B		
69-80	C		74 C
55-68	D		
39-54	E	50 E	
21-38	F		
1-20	G		

London branches open six days a week Mon - Sat

Canary Wharf | City | Colindale | Dartmouth Park | Ealing | Fulham
Hammersmith | Hampstead | Highgate | Hyde Park | Kensington | Kew
Knightsbridge | Nine Elms | Shoreditch | Southall | Surrey Quays
Wapping | Wembley | White City | Woolwich

International offices

China | Hong Kong SAR | India | Indonesia | Qatar | Malaysia | Middle East | Pakistan
Singapore | South Africa | Thailand | Turkey

