



Benham & Reeves

King Henrys Road, Hampstead, NW3

£1,384 per week, £5,997 per month + fees

 3 Bedrooms  3 Bathrooms 
Furnished/UnFurnished

Spectacular, large ground floor garden apartment set in a beautiful Victorian conversion, private entrance, two off street parking spaces and Primrose Hill zone residents' parking. A short walk from Swiss Cottage Station.

Please [click here](#) for full detail

Property features

3 Double Bedrooms | 3 Bathrooms (2 En-Suite) | Reception Room | Furn/Unfurn | Fitted Kitchen | EPC-D | Jacuzzi and Alarm | Private Garden, Conservatory | Off Street Parking | Swiss Cottage station

For more information about this property,
please call our Hampstead branch on

020 7435 9681

Redress & Client Money Protection :

Benham and Reeves are members of The Property Ombudsman redress scheme and have Client Money protection with ARLA Propertymark. You can find more information on our website at <https://www.benhams.com/membership/>



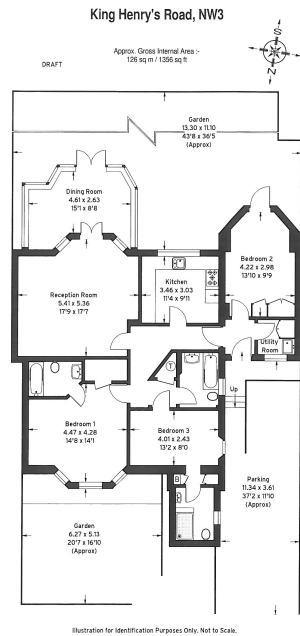
Benham & Reeves



King Henrys Road, Hampstead, NW3

£1,384 per week, £5,997 per month + fees

www.benhams.com



Score	Energy rating	Current	Potential
92+	A		
81-91	B		
69-80	C		74 C
55-68	D	66 D	
39-54	E		
21-38	F		
1-20	G		

London branches open six days a week Mon - Sat

Canary Wharf | City | Colindale | Dartmouth Park | Ealing | Fulham
 Hammersmith | Hampstead | Highgate | Hyde Park | Kensington | Kew
 Knightsbridge | Nine Elms | Shoreditch | Southall | Surrey Quays
 Wapping | Wembley | White City | Woolwich

International offices

China | Hong Kong SAR | India | Indonesia | Qatar | Malaysia | Middle East | Pakistan
 Singapore | South Africa | Thailand | Turkey

