



Benham & Reeves

Frogna! Lane, Hampstead, NW3

£647 per week, £2,804 per month + fees

 3 Bedrooms  2 Bathrooms  Unfurnished

A large Top Floor apartment situated in a striking period conversion on a quiet residential street in Hampstead. Nearby transport links include Finchley Road and Frognal station on the London Overground.

Please [click here](#) for full detail

Property features

3 Bedrooms | 2 Bathrooms | Reception | Unfurnished | Fitted Kitchen | EPC-D | Period Fireplace | Off Street Parking | Nearby Finchley Road & Frognal Station

For more information about this property,
please call our Hampstead branch on

020 7435 9681

Redress & Client Money Protection :

Benham and Reeves are members of The Property Ombudsman redress scheme and have Client Money protection with ARLA Propertymark. You can find more information on our website at <https://www.benhams.com/membership/>



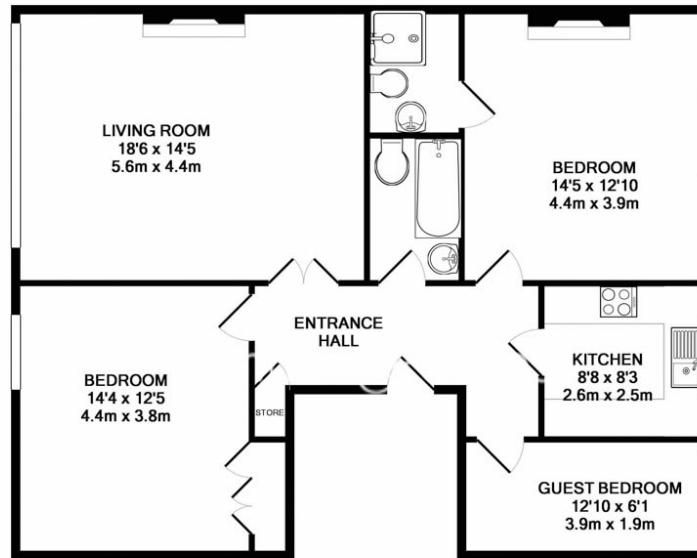
Benham & Reeves



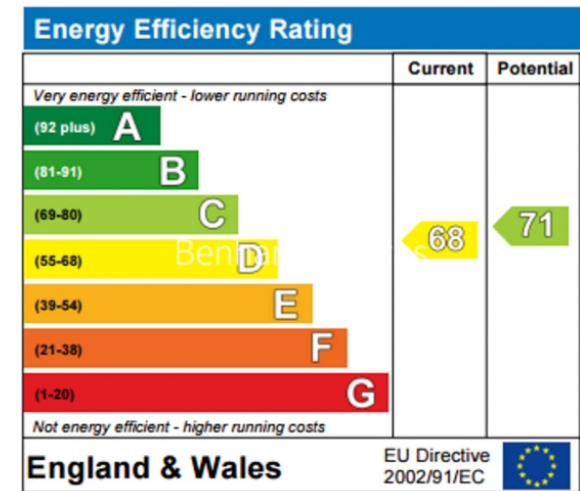
Frognal Lane, Hampstead, NW3

£647 per week, £2,804 per month + fees

www.benhams.com



F4.20FR.NW3
TOTAL APPROX. FLOOR AREA 966 SQ. FT. (89.7 SQ. M.)
Whilst every attempt has been made to ensure the accuracy of the floor plan contained here, measurements of doors, windows, rooms and any other items are approximate and no responsibility is taken for any error, omission, or mis-statement. This plan is for illustrative purposes only and should be used as such by any prospective purchaser. The services, systems and appliances shown have not been tested and no guarantee as to their operability or efficiency can be given
Made with Metropix ©2016



London branches open six days a week Mon - Sat

Canary Wharf | City | Colindale | Dartmouth Park | Ealing | Fulham
Hammersmith | Hampstead | Highgate | Hyde Park | Kensington | Kew
Knightsbridge | Nine Elms | Shoreditch | Southall | Surrey Quays
Wapping | Wembley | White City | Woolwich

International offices

China | Hong Kong SAR | India | Indonesia | Qatar | Malaysia | Middle East | Pakistan
Singapore | South Africa | Thailand | Turkey



Benham & Reeves