



Benham & Reeves

Sovereign Court, Hammersmith, W6

£831 per week, £3,600 per month + fees

 2 Bedrooms  2 Bathrooms  Furnished

A spacious 6th floor apartment, with 24-hour concierge, situated within a luxury, prestigious development in Hammersmith. Close to good transport options including Hammersmith Underground Station.

Please [click here](#) for full detail

Property features

2 Bedrooms | 2 Bathrooms | Reception | Furnished | Fitted Kitchen | EPC-B | 24 Hour Concierge | Private Balcony and Communal Gardens | Nearby Hammersmith Tube Station

For more information about this property, please call our Hammersmith branch on

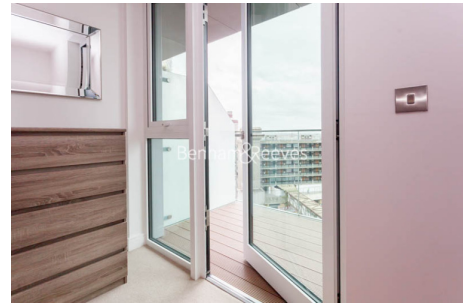
020 8600 0960

Redress & Client Money Protection :

Benham and Reeves are members of The Property Ombudsman redress scheme and have Client Money protection with ARLA Propertymark. You can find more information on our website at <https://www.benhams.com/membership/>



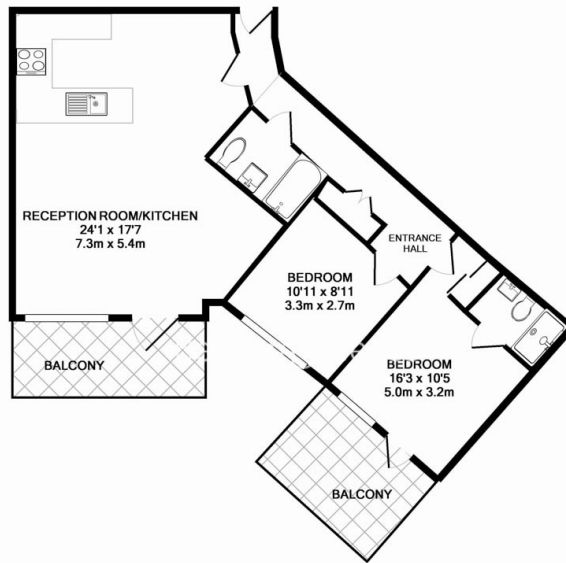
Benham & Reeves



Sovereign Court, Hammersmith, W6

£831 per week, £3,600 per month + fees

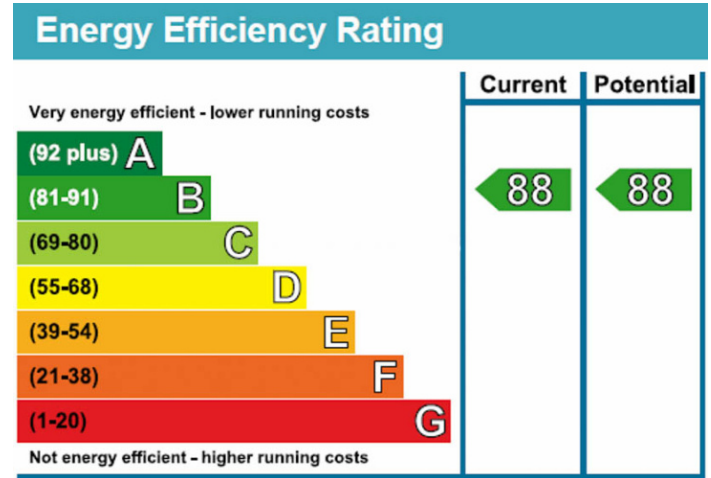
www.benhams.com



7TH FLOOR

Whilst every attempt has been made to ensure the accuracy of the floor plan contained here, measurements of doors, windows, rooms and any other items are approximate and no responsibility is taken for any error, omission, or mis-statement. This plan is for illustrative purposes only and should be used as such by any prospective purchaser. The services, systems and appliances shown have not been tested and no guarantee as to their operability or efficiency can be given.

Made with Metropix ©2018



London branches open six days a week Mon - Sat

Canary Wharf | City | Colindale | Dartmouth Park | Ealing | Fulham
Hammersmith | Hampstead | Highgate | Hyde Park | Kensington | Kew
Knightsbridge | Nine Elms | Shoreditch | Southall | Surrey Quays
Wapping | Wembley | White City | Woolwich

International offices

China | Hong Kong SAR | India | Indonesia | Qatar | Malaysia | Middle East | Pakistan
Singapore | South Africa | Thailand | Turkey

