



Benham & Reeves

Sovereign Court, Hammersmith, W6

£623 per week, £2,700 per month + fees

 1 Bedroom  1 Bathroom  Furnished

A spacious 2nd floor luxury apartment situated in an exclusive development in Hammersmith. The property is ideally located within walking distance to Hammersmith underground station (District and Piccadilly line).

Please [click here](#) for full detail

Property features

1 bedroom 1 bathroom, furnished | Wood Floor throughout | Comfort Cooling, Wall heating and Underfloor heating | Wall Mounted TV / Large Private Terrace | Cream Stone Finish Luxury Bathroom | EPC-B | Contemporary Open-Plan Fitted Kitchen | 24 hr Concierge / Quality Residents' Gym | Very Sizeable Open-Plan Reception with Hardwood Floors | Moments from Hammersmith Underground Station & Local Buses

For more information about this property,
please call our Hammersmith branch on

020 8600 0960

Redress & Client Money Protection :

Benham and Reeves are members of The Property Ombudsman redress scheme and have Client Money protection with ARLA Propertymark. You can find more information on our website at <https://www.benhams.com/membership/>



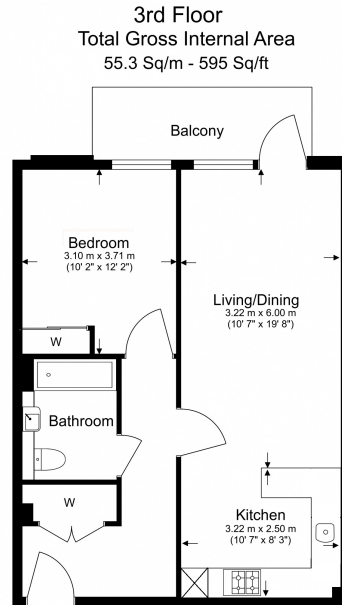
Benham & Reeves



Sovereign Court, Hammersmith, W6

£623 per week, £2,700 per month + fees

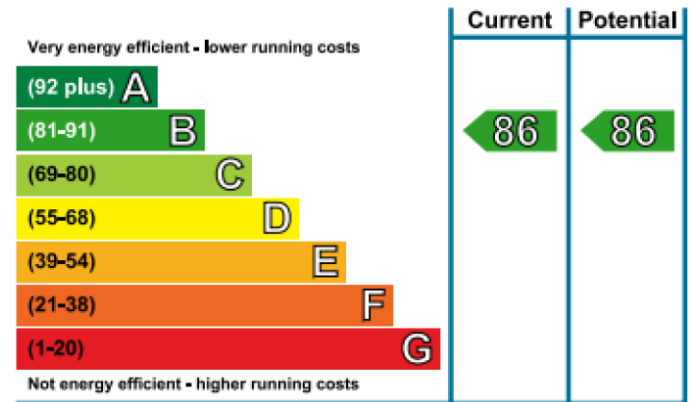
www.benhams.com



Benham & Reeves

Floor Plan measurements are approximate and are for illustrative purposes only. While we do not doubt the floor plans accuracy, we make no guarantee, warranty or representation as to the accuracy and completeness of the floor plan.

Energy Efficiency Rating



London branches open six days a week Mon - Sat

Canary Wharf | City | Colindale | Dartmouth Park | Ealing | Fulham
Hammersmith | Hampstead | Highgate | Hyde Park | Kensington | Kew
Knightsbridge | Nine Elms | Shoreditch | Southall | Surrey Quays
Wapping | Wembley | White City | Woolwich

International offices

China | Hong Kong SAR | India | Indonesia | Qatar | Malaysia | Middle East | Pakistan
Singapore | South Africa | Thailand | Turkey



Benham & Reeves