



Benham & Reeves

Queens Wharf, Hammersmith, W6

£923 per week, £4,000 per month + fees

 2 Bedrooms  2 Bathrooms  Furnished

Well presented, air-conditioned 4th floor apartment, with views over the communal gardens, situated in a sought after development a two minute walk to Hammersmith Station (District, Piccadilly, and Hammersmith & City lines).

Please [click here](#) for full detail

Property features

2 Bedrooms | 2 Bathrooms | Reception | Furnished | Fitted Kitchen | EPC-B | 24 Hour Concierge | Close to Amenities | Nearby Hammersmith Underground Station

For more information about this property, please call our Hammersmith branch on

020 8600 0960

Redress & Client Money Protection :

Benham and Reeves are members of The Property Ombudsman redress scheme and have Client Money protection with ARLA Propertymark. You can find more information on our website at <https://www.benhams.com/membership/>



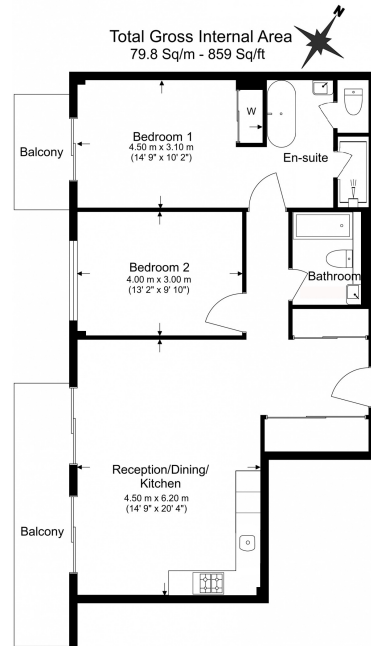
Benham & Reeves



Queens Wharf, Hammersmith, W6

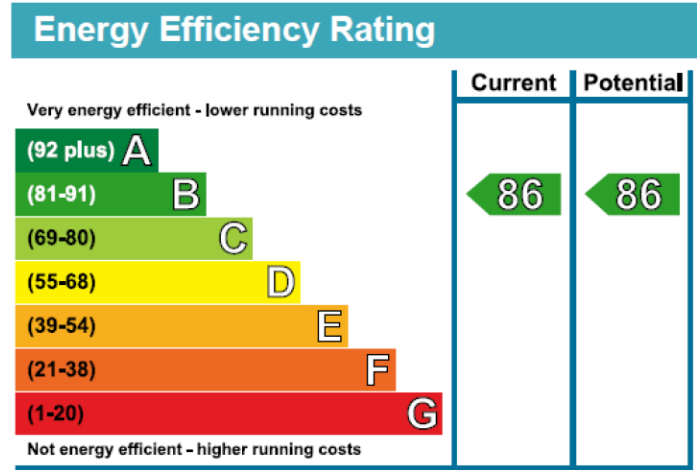
£923 per week, £4,000 per month + fees

www.benhams.com



Benham & Reeves

Floor Plan measurements are approximate and are for illustrative purposes only. While we do not doubt the floor plans accuracy, we make no guarantee, warranty or representation as to the accuracy and completeness of the floor plan.



London branches open six days a week Mon - Sat

Canary Wharf | City | Colindale | Dartmouth Park | Ealing | Fulham
Hammersmith | Hampstead | Highgate | Hyde Park | Kensington | Kew
Knightsbridge | Nine Elms | Shoreditch | Southall | Surrey Quays
Wapping | Wembley | White City | Woolwich



International offices

China | Hong Kong SAR | India | Indonesia | Qatar | Malaysia | Middle East | Pakistan
Singapore | South Africa | Thailand | Turkey

Benham & Reeves