



Benham & Reeves

Sovereign Court, Hammersmith, W6

£1,090 per week, £4,725 per month + fees

 3 Bedrooms  2 Bathrooms  Furnished

Luxury thirteenth floor apartment located in a sought-after development in the heart of Hammersmith. A short walk from Hammersmith Underground Station (Circle, District, Piccadilly & Hammersmith, and City lines).

Please [click here](#) for full detail

Property features

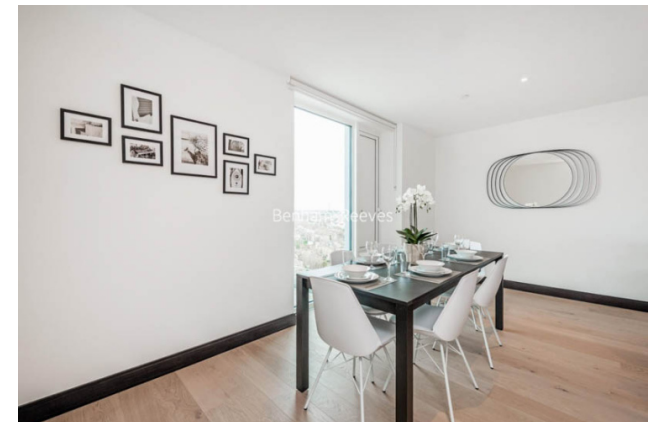
3 Double Bedrooms | 24/7 Concierge | Modern Development | Kitchen with Breakfast Bar & Siemens Integrated Appliances | Residents Gym | EPC-B | Balcony with Far Reaching View | Many Shops, Bars & Restaurants on the Doorstep | Hammersmith Underground Station

For more information about this property,
please call our Hammersmith branch on

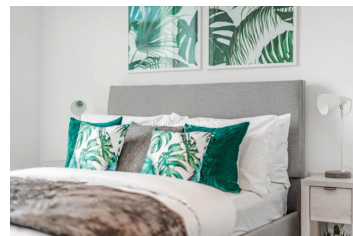
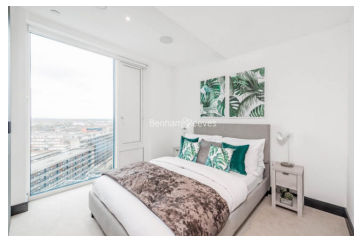
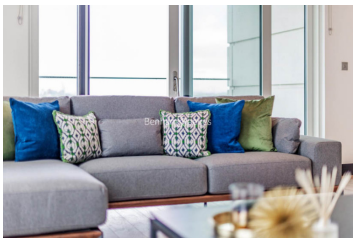
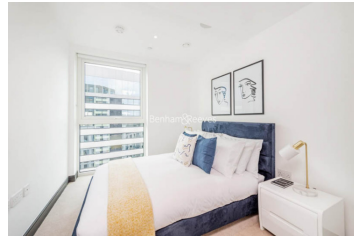
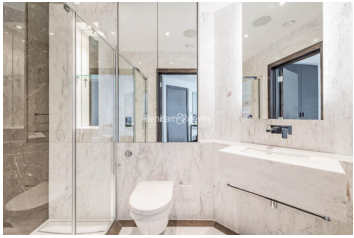
020 8600 0960

Redress & Client Money Protection :

Benham and Reeves are members of The Property Ombudsman redress scheme and have Client Money protection with ARLA Propertymark. You can find more information on our website at <https://www.benhams.com/membership/>



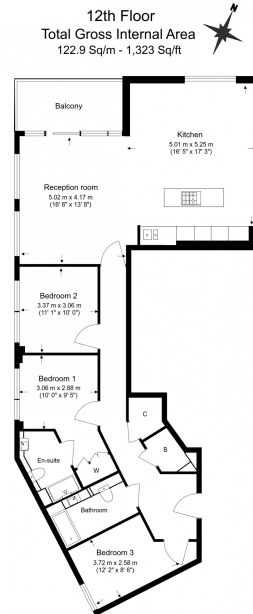
Benham & Reeves



Sovereign Court, Hammersmith, W6

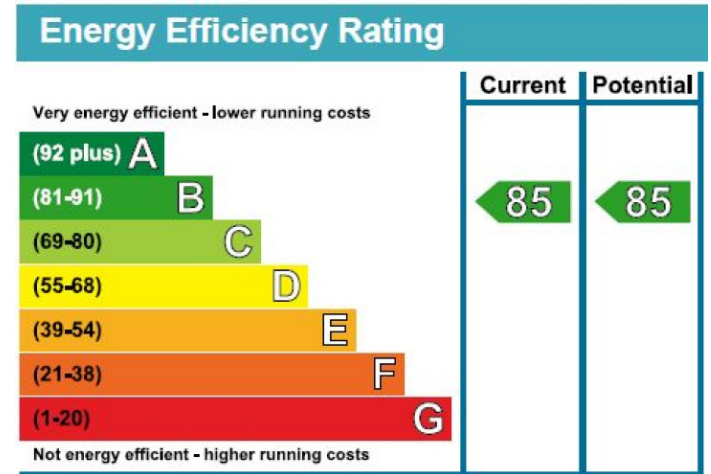
£1,090 per week, £4,725 per month + fees

www.benhams.com



Benham & Reeves

Floor Plan measurements are approximate and are for illustrative purposes only. While we do not doubt the floor plans accuracy, we make no guarantee, warranty or representation as to the accuracy and completeness of the floor plan.



London branches open six days a week Mon - Sat

Canary Wharf | City | Colindale | Dartmouth Park | Ealing | Fulham
Hammersmith | Hampstead | Highgate | Hyde Park | Kensington | Kew
Knightsbridge | Nine Elms | Shoreditch | Southall | Surrey Quays
Wapping | Wembley | White City | Woolwich

International offices

China | Hong Kong SAR | India | Indonesia | Qatar | Malaysia | Middle East | Pakistan
Singapore | South Africa | Thailand | Turkey



Benham & Reeves