



Benham & Reeves

Sovereign Court, Hammersmith, W6

£600 per week, £2,600 per month + fees

 1 Bedroom  1 Bathroom  Furnished

Brand-new, spacious 5th floor apartment with luxury facilities, located in a sought-after development in the heart of Hammersmith. Ideally situated within walking distance to Hammersmith Underground station (Circle, District, Piccadilly and Hammersmith and City lines).

Please [click here](#) for full detail

Property features

1 bedroom 1 bathroom, furnished flat located on the 5th floor | Wood Floor throughout | Comfort Cooling, Wall heating and Underfloor heating | Wall Mounted TV / Large Private Terrace | Cream Stone Finish Luxury Bathroom | EPC-B | Contemporary Open-Plan Fitted Kitchen | Long Hallway / Utility Room | 24 hr Concierge / Quality Residents' Gym | Moments from Hammersmith Underground Station & Local Buses

For more information about this property, please call our Hammersmith branch on

020 8600 0960

Redress & Client Money Protection :

Benham and Reeves are members of The Property Ombudsman redress scheme and have Client Money protection with ARLA Propertymark. You can find more information on our website at <https://www.benhams.com/membership/>



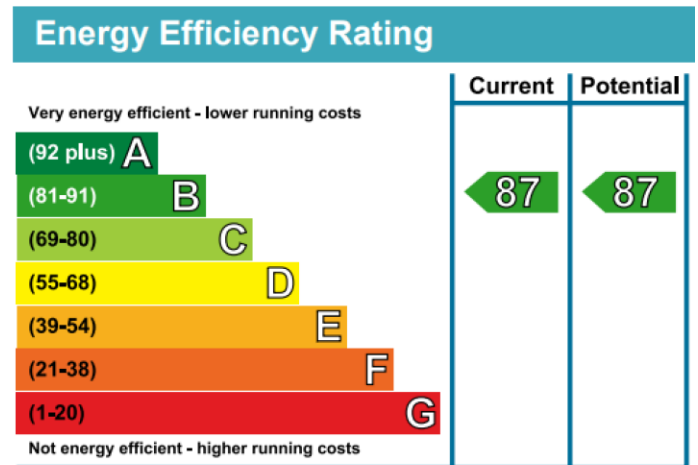
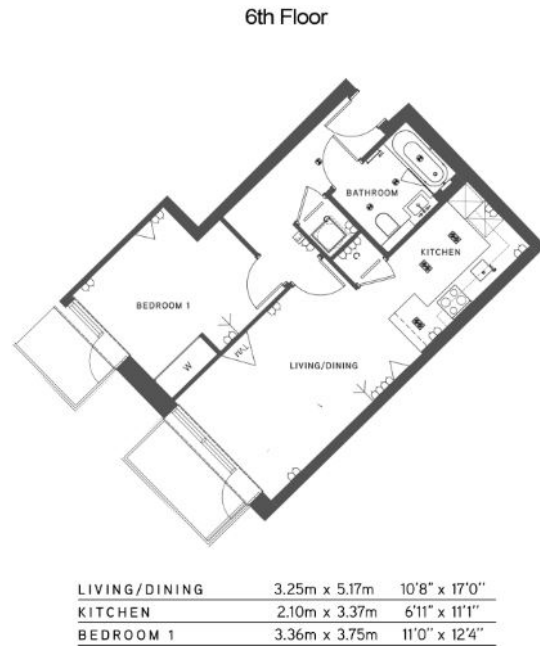
Benham & Reeves



Sovereign Court, Hammersmith, W6

£600 per week, £2,600 per month + fees

www.benhams.com



London branches open six days a week Mon - Sat

Canary Wharf | City | Colindale | Dartmouth Park | Ealing | Fulham
Hammersmith | Hampstead | Highgate | Hyde Park | Kensington | Kew
Knightsbridge | Nine Elms | Shoreditch | Southall | Surrey Quays
Wapping | Wembley | White City | Woolwich

International offices

China | Hong Kong SAR | India | Indonesia | Israel | Malaysia | Middle East | Pakistan
Qatar | Singapore | South Africa | Thailand | Turkey



Benham & Reeves